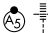
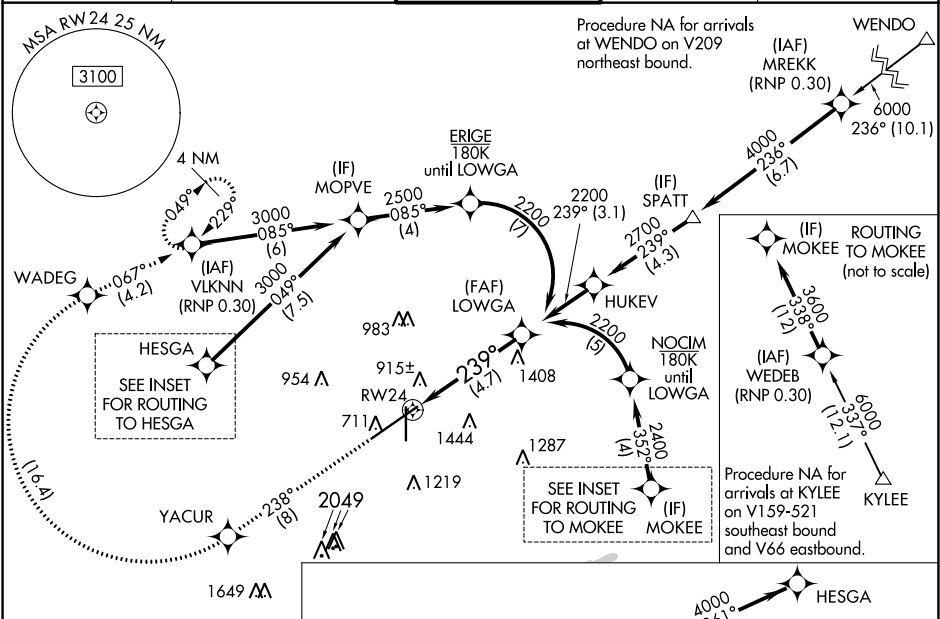


APP CRS <b>239°</b>	Rwy Idg <b>10801</b> TDZE <b>641</b> Apt Elev <b>650</b>
------------------------	--

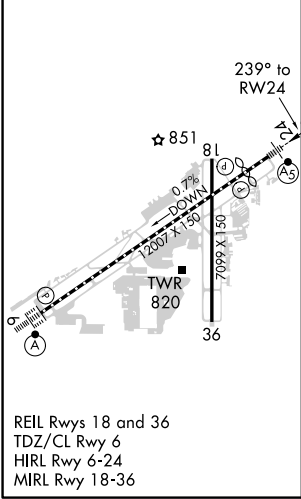
**RNAV (RNP) Z RWY 24**  
BIRMINGHAM-SHUTTLESWORTH INTL (BHM)

RNP AR APCH. RF required. ▼ For uncompensated Baro-VNAV systems, procedure NA below -8°C or above 54°C. For inop ALS, increase RNP 0.15 all Cats visibility to 1 3⁄8 and increase RNP 0.30 all Cats visibility to 1 3⁄4 SM.	MALSR 	MISSED APPROACH: Climb to 3000 on track 238° to YACUR then, right turn to WADEG, then on track 067° to VLKNN and hold.
--	--	--

ATIS <b>119.4 270.1</b>	BIRMINGHAM APP CON <b>123.8 256.8</b>	BIRMINGHAM TOWER <b>119.9 317.725</b>	GND CON <b>121.7 348.6</b>	CLNC DEL <b>125.675 305.2</b>
----------------------------	--	--	-------------------------------	----------------------------------



ELEV 650	<b>D</b>	TDZE 641
----------	----------	----------



ROUTING TO HESGA (not to scale)

CRMSN

9000 061° (7)

3000

tr 238°

YACUR

tr 067°

VLKNN

ISOJO

4000 061° (19.1)

6000 061° (12.2)

(IAF) JAVJA (RNP 0.30)

ROUTING TO HESGA (not to scale)

LOWGA

2200

239°

See planview for multiple IF locations.

GP 3.00°  
TCH 52

4.7 NM

CATEGORY	A	B	C	D
RNP 0.15 DA	1149-1	508 (500-1)		
RNP 0.30 DA	1243-1 3⁄8	602 (600-1 3⁄8)		

**AUTHORIZATION REQUIRED**

SE-4, 31 DEC 2020 to 28 JAN 2021

SE-4, 31 DEC 2020 to 28 JAN 2021