

LOC I-DHN	APP CRS	Rwy Idg	8496
108.3	318°	TDZE	382
		Apt Elev	401

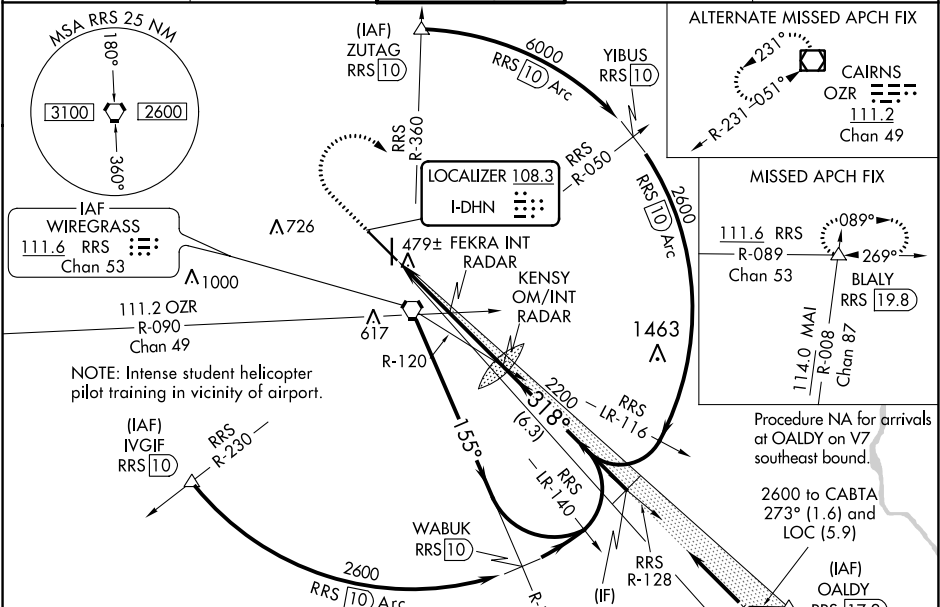
ILS or LOC RWY 32  
DOTHAN RGNL (DHN)

**⚠** For inoperative MALS, increase S-LOC 32 Cat C/D visibility to 2½ miles.  
\*\* RVR 1800 authorized with use of FD or AP or HUD to DA.

MALS

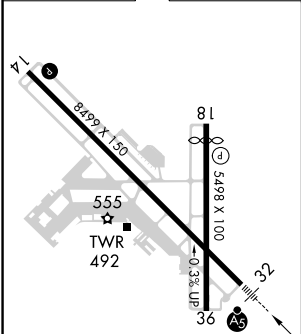
MISSED APPROACH: Climb to 1000 then climbing right turn to 3000 on hdg 130° and RRS VORTAC R-089 to BLALY INT/RRS 19.8 DME and hold.

ATIS 135.725	CAIRNS APP CON* 125.4 327.125	DOTHAN TOWER ★ 118.4 (CTAF) 0 257.6	GND CON 121.7 348.6	UNICOM 122.95
-----------------	----------------------------------	--	------------------------	------------------

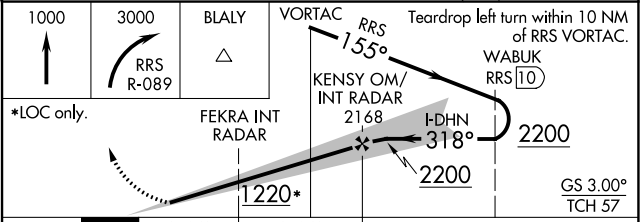


DME or RADAR REQUIRED

ELEV 401	D	TDZE 382
----------	---	----------



REIL Rwy 18	
REIL Rwy 14	
HIRL Rwy 18-36	
HIRL Rwy 14-32	
FAF to MAP 5.4 NM	
Knots	60 90 120 150 180
Min:Sec	5:24 3:36 2:42 2:10 1:48



CATEGORY	A	B	C	D
S-ILS 32 **	582/24 200 (200-½)			
S-LOC 32	1220/24 838 (900-½)	1220/40 838 (900-¾)	1220-1½ 838 (900-1½)	1220-2¾ 819 (900-2¾)
CIRCLING	1220-1¼ 819 (900-1¼)	1220-2½ 819 (900-2½)	1220-2¾ 819 (900-2¾)	1220-3¾ 819 (900-3¾)
FEKRA FIX MINIMUMS				
S-LOC 32	820/24 438 (500-½)	820/40 438 (500-¾)	920-1½ 519 (600-1½)	1040-2 639 (700-2)
CIRCLING	860-1 459 (500-1)	920-1½ 519 (600-1½)	1040-2 639 (700-2)	

SE-4, 31 DEC 2020 to 28 JAN 2021

SE-4, 31 DEC 2020 to 28 JAN 2021