

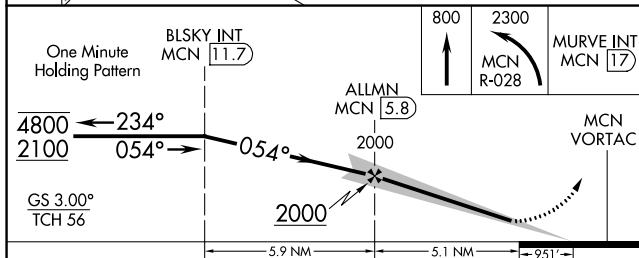
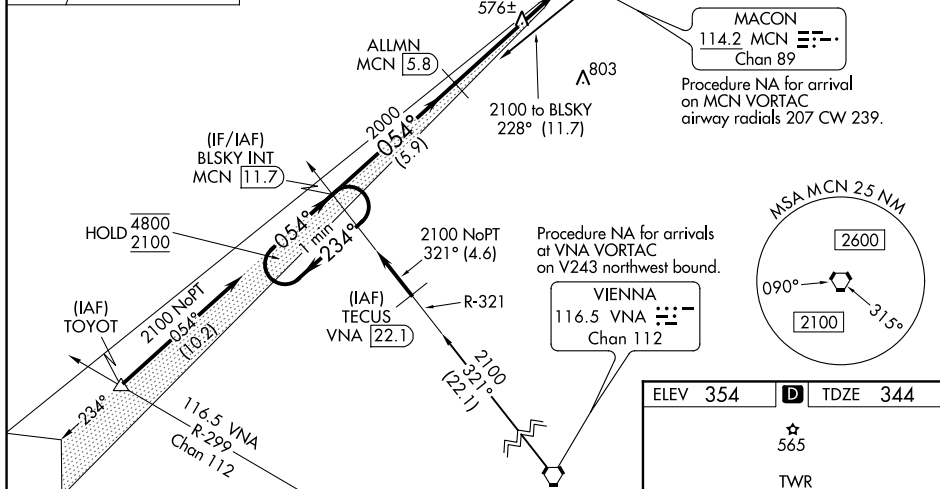
ILS RWY 5 (SA CAT I & II)
MIDDLE GEORGIA RGNL (MCN)

T DME from MCN VORTAC. Simultaneous reception of I-MCN and MCN DME required.

A SA CAT I: Requires specific OPSPEC, MSPEC, or LOA approval and use of HUD to DH.
SA CAT II: Reduced lighting: Requires specific OPSPEC, MSPEC, or LOA approval and use of autoland or HUD to touchdown. SA CAT I/II: Procedure NA when tower closed.



MISSED APPROACH:
Climb to 800 then climbing
left turn to 2300 on MCN
VORTAC R-028 to MURVE
INT/MCN 17 DME and hold.



| CATEGORY | A | B | C | D |
|----------|-----------|-----------|--------|-----|
| S-ILS 5 | SA CAT I | RA 216/14 | 150 DA | 494 |
| S-ILS 5 | SA CAT II | RA 151/12 | 100 DA | 444 |

SA CATEGORY I & II ILS - SPECIAL AIRCREW
& AIRCRAFT CERTIFICATION REQUIRED

