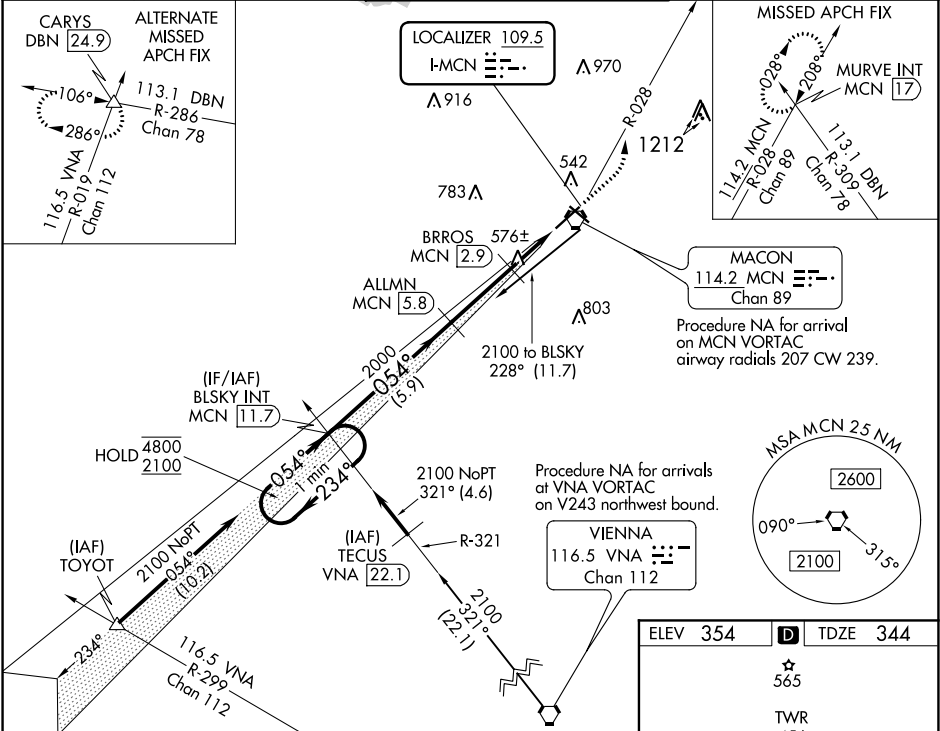


LOC I-MCN	APP CRS	Rwy Idg	6221
109.5	054°	TDZE	344
		Apt Elev	354

ILS or LOC RWY 5
MIDDLE GEORGIA RGNL (MCN)

DME required.		MALSR	MISSED APPROACH: Climb to 800 then climbing left turn to 2300 on MCN VORTAC R-028 to MURVE INT/MCN 17 DME and hold.
ATIS	ATLANTA APP CON *	MACON TOWER *	GND CON
120.775	124.2 279.6	128.2 (CTAF) 0 257.8	121.65
			UNICOM
			122.95



One Minute Holding Pattern		BLSKY INT MCN (11.7)	*LOC only.	800	2300	MURVE INT MCN (17)
4800 ← 234°		054° →	054°	ALLMN MCN (5.8)	BRROS MCN (2.9)	MCN VORTAC
2100				2000	*MCN (2.2)	MCN (0.8)
GS 3.00° TCH 56				2000		
				5.9 NM	2.9 NM	0.8 NM
CATEGORY	A	B	C	D	E	
S-ILS 5**	544/24 200 (200-½)					
S-LOC 5	840/24	496 (500-½)	840/50	496 (500-1)		
CIRCLING	900-1	546 (600-1)	920-1½	1120-2½	1180-3	
			566 (600-1½)	766 (800-2½)	826 (900-3)	

