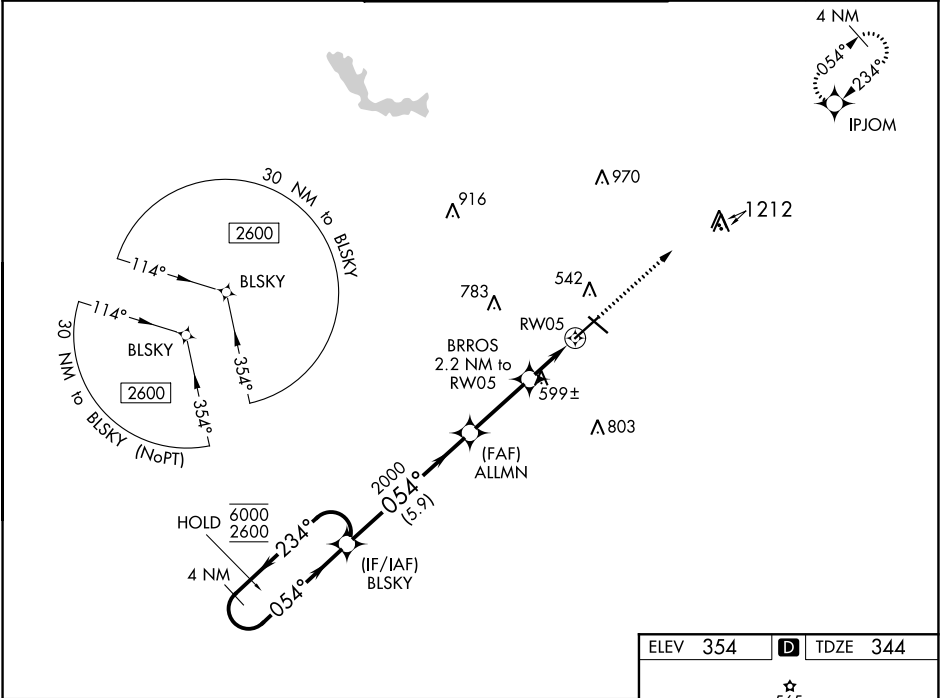


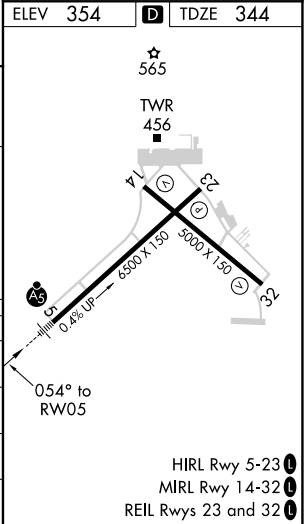
WAAS CH <b>97315</b> <b>W05A</b>	APP CRS <b>054°</b>	Rwy Idg TDZE <b>344</b> Apt Elev <b>354</b>
--	------------------------	---

RNAV (GPS) RWY 5  
MIDDLE GEORGIA RGNL (MCN)

RNP APCH. <div><div></div>For uncompensated Baro-VNAV systems, LNAV/VNAV NA below -8°C or above 54°C.</div>		MALSR <div><div></div></div>	MISSED APPROACH: Climb to 2600 direct IPJOM and hold.	
ATIS <b>120.775</b>	ATLANTA APP CON ★ <b>124.2 279.6</b>	MACON TOWER ★ <b>128.2 (CTAF) 257.8</b>	GND CON <b>121.65</b>	UNICOM <b>122.95</b>



4 NM Holding Pattern		BLSKY	ALLMN 2000	BRROS 2.2 NM to RW05	2600 IPJOM	↑ *LNAV only.	✦
6000 ← 234° 2600 → 054°			054°				
GP 3.00° TCH 56			2000	*1.5 NM to RW05			
		5.9 NM	2.9 NM	0.7 NM	1.5 NM		
CATEGORY		A	B	C	D		
LPV	DA	544/24 200 (200-½)					
LNAV/ VNAV	DA	863-1⅜ 519 (600-1⅜)					
LNAV	MDA	860/24	516 (600-½)	860/55	516 (600-1)		
CIRCLING		900-1	546 (600-1)	920-1½ 566 (600-1½)	1120-2½ 766 (800-2½)		



SE-4, 31 DEC 2020 to 28 JAN 2021

SE-4, 31 DEC 2020 to 28 JAN 2021