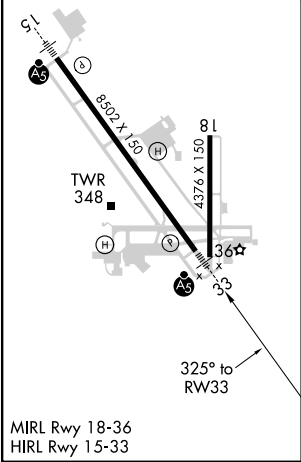
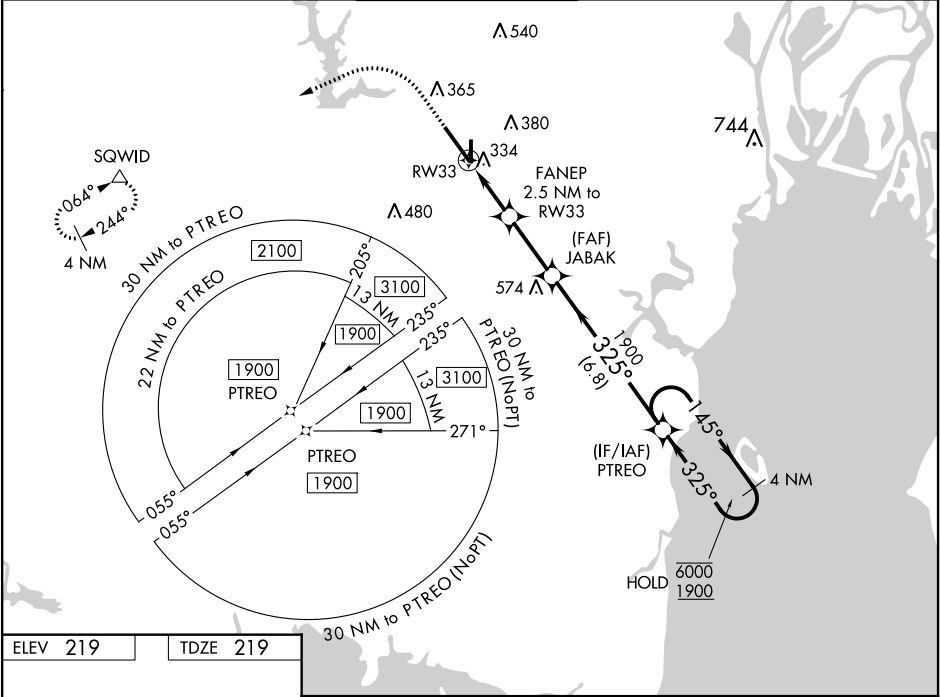


WAAS CH <b>69306</b> <b>W33A</b>	APP CRS <b>325°</b>	Rwy Idg <b>8502</b> TDZE <b>219</b> Apt Elev <b>219</b>
--	------------------------	---

RNAV (GPS) RWY 33

MOBILE RGNL (MOB)

RNP APCH.		MALSR		MISSED APPROACH: Climb to 700 then climbing left turn to 2000 direct SQWID and hold.	
ASR					
For uncompensated Baro-VNAV systems, LNAV/VNAV NA below -4°C or above 54°C. For inop ALS, increase LNAV/VNAV all Cnts visibility to RVR 4500.					
** RVR 1800 authorized with use of FD or AP or HUD to DA.					
ATIS	MOBILE APP CON ★	MOBILE TOWER ★	GND CON	CLNC DEL	UNICOM
124.75 257.85	118.5 269.3	118.3 (CTAF) 0 239.0	121.9 348.6	119.85	122.95



ELEV 219		TDZE 219	
700		2000	
SQWID		VGSI and RNAV glidepath not coincident (VGSI Angle 3.00/TCH 50).	
*LNAV only.		PTREO 4 NM Holding Pattern	
*1 NM to RW33		JABAK 1900	
FANEP 2.5 NM to RW33		325° 145° 6000 1900	
*1060		GP 3.00° TCH 57	
1 NM 1.5 NM 2.6 NM 6.8 NM			
CATEGORY	A	B	C
LPV DA**	419/24	200 (200-½)	
LNAV/VNAV DA	505/24	286 (300-½)	
LNAV MDA	600/24	381 (400-½)	600/35 381 (400-¾)
CIRCLING	680-1	461 (500-1)	740-1½ 521 (600-1½) 780-2 561 (600-2)