

WAAS CH <b>50411</b> <b>W14A</b>	APP CRS <b>140°</b>	Rwy Idg <b>9618</b> TDZE <b>26</b> Apt Elev <b>26</b>
--	------------------------	---

RNAV (GPS) RWY 14

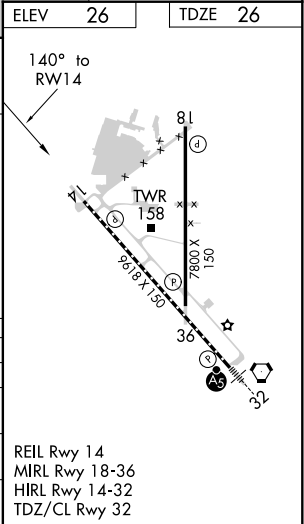
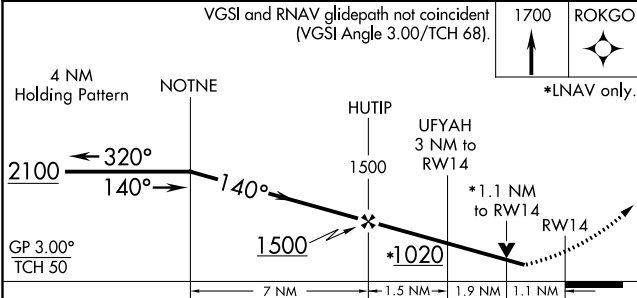
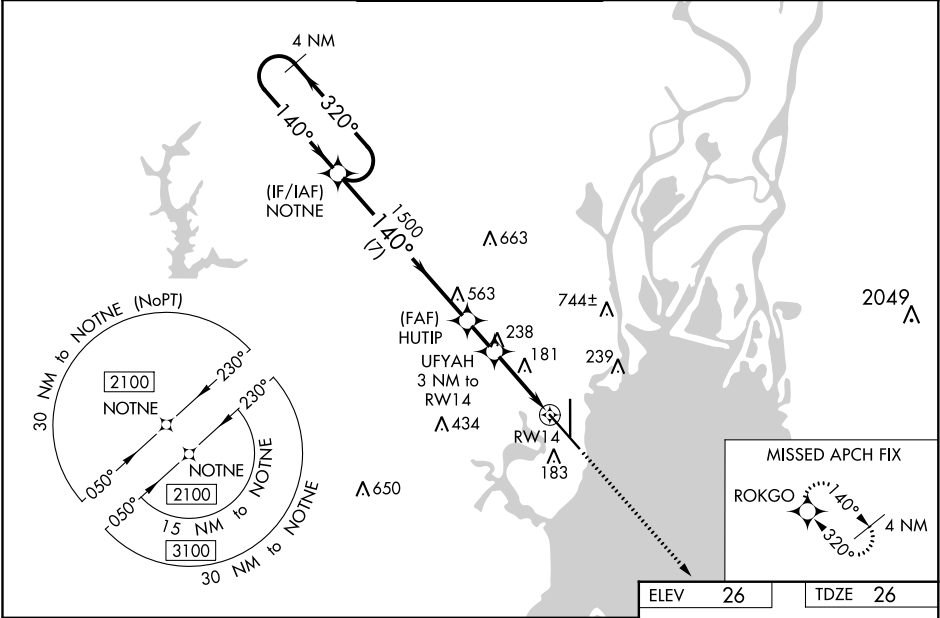
MOBILE DOWNTOWN (BFM)

RNP APCH.

**⚠** When local altimeter setting not received, use Mobile Rgnl altimeter setting and increase all DA 50 feet and all MDA 60 feet, increase LPV all Cnts, LNAV/VNAV all Cnts, LNAV Cnts C and D, and Circling Cat C visibility ¼ mile. For uncompensated Baro-VNAV systems, LNAV/VNAV NA below 13°C (56°F) or above 54°C (130°F). Baro-VNAV and VDP NA when using Mobile Rgnl altimeter setting. Rwy 14 helicopter visibility reduction below ¾ SM NA.

MISSED APPROACH:  
Climb to 1700 direct  
ROKGO and hold.

ATIS <b>135.575</b>	MOBILE APP CON ★ <b>118.5 269.3</b>	DOWNTOWN TOWER ★ <b>118.8 (CTAF) 0 251.1</b>	GND CON <b>121.7 239.3</b>	UNICOM <b>122.95</b>
------------------------	--	---	-------------------------------	-------------------------



CATEGORY	A	B	C	D
LPV DA		311-7/8	285 (300-7/8)	
LNAV/VNAV DA		334-1	308 (400-1)	
LNAV MDA	440-1	414 (500-1)	440-1 1/8	414 (500-1 1/8)
CIRCLING	680-1	654 (700-1)	680-1 3/4 654 (700-1 3/4)	1100-3 1074 (1100-3)

SE-4, 31 DEC 2020 to 28 JAN 2021

SE-4, 31 DEC 2020 to 28 JAN 2021