

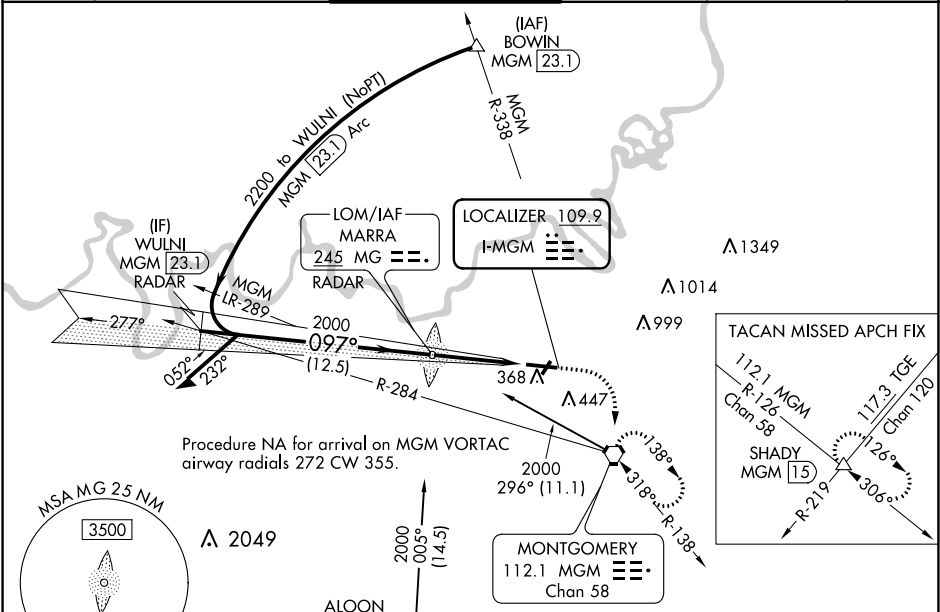
LOC I-MGM	APP CRS	Rwy Idg	9020
109.9	097°	TDZE	219
		Apt Elev	221

ILS or LOC RWY 10

MONTGOMERY RGNL (DANNELLY FIELD) (MGM)

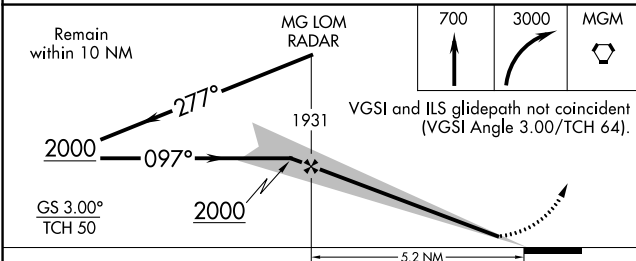
<p>⚠ Circling for Cat E NA north of Rwy 10-28. For inop ALS, increase S-ILS 10 Cat E visibility to RVR 4000, and increase S-LOC 10 Cat E visibility to 1% SM.</p> <p>⚠ ASR ** RVR 1800 authorized with the use of FD or AP or HUD to DA.</p>	<p>MALS</p> <p>AS</p>	<p>MISSED APPROACH: Climb to 700 then climbing right turn to 3000 direct MGM VORTAC and hold, continue climb-in-hold to 3000 (TACAN aircraft continue 3500 on MGM VORTAC R-126 to SHADY INT/ MGMT 15 DME and hold SE, RT, 306° inbound).</p>
--	-------------------------------------	---

ATIS	MONTGOMERY APP CON *	DANNELLY TOWER *	GND CON	CLNC DEL	UNICOM
120.675	124.0 363.025	119.7 (CTAF) 360.85	121.7 348.6	118.3 270.3	122.95

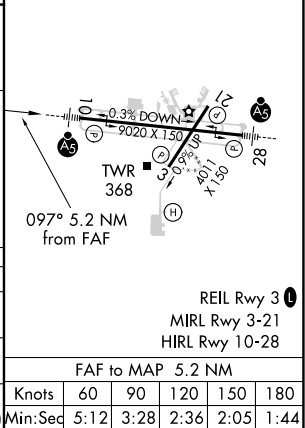


ELEV	221	TDZE	219
------	-----	------	-----

ADF or DME or RADAR REQUIRED



CATEGORY	A	B	C	D	E
S-ILS 10**	419/24 200 (200-½)				
S-LOC 10	660/24	441 (500-½)	660/45	441 (500-¾)	
C CIRCLING	700-1	479 (500-1)	800-1½ 579 (600-1½)	860-2 639 (700-2)	860-2¼ 639 (700-2¼)



ILS or LOC RWY 10

SE-4, 31 DEC 2020 to 28 JAN 2021

SE-4, 31 DEC 2020 to 28 JAN 2021