
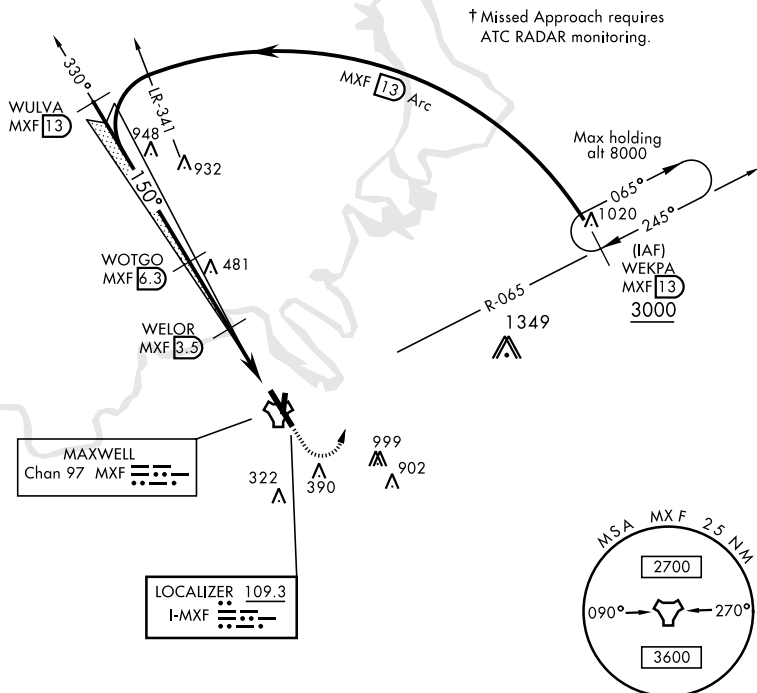


ILS or LOC/DME RWY 15

LOC I-MXF 109.3	APCH CRS 150°	Rwy Idg 8008 TDZE 171 Arpt Elev 171	AL-274 [USAF]	MAXWELL AFB (KMXF)
▽ * When ALS inop, increase RVR to 40 and vis to $\frac{3}{4}$ mile. ** When ALS inop, increase CAT AB RVR to 55 and vis to 1 mile, CAT CDE RVR to 60 and vis to $1\frac{1}{2}$ mile. *** Circling not authorized E of Rwy 15-33.			ALSF-1 	† MISSED APPROACH: Climb to 1000, then climbing left turn to 3000 to intercept MXF TACAN R-065 outbound to 13 DME (WEKPA) and hold.
ATIS ★ 134.7 269.9		MONTGOMERY APP CON 121.2 269.05	MAXWELL TOWER ★ 118.15 253.5	GND CON 127.15 289.4



EMERG SAFE ALT 100 NM 5000

