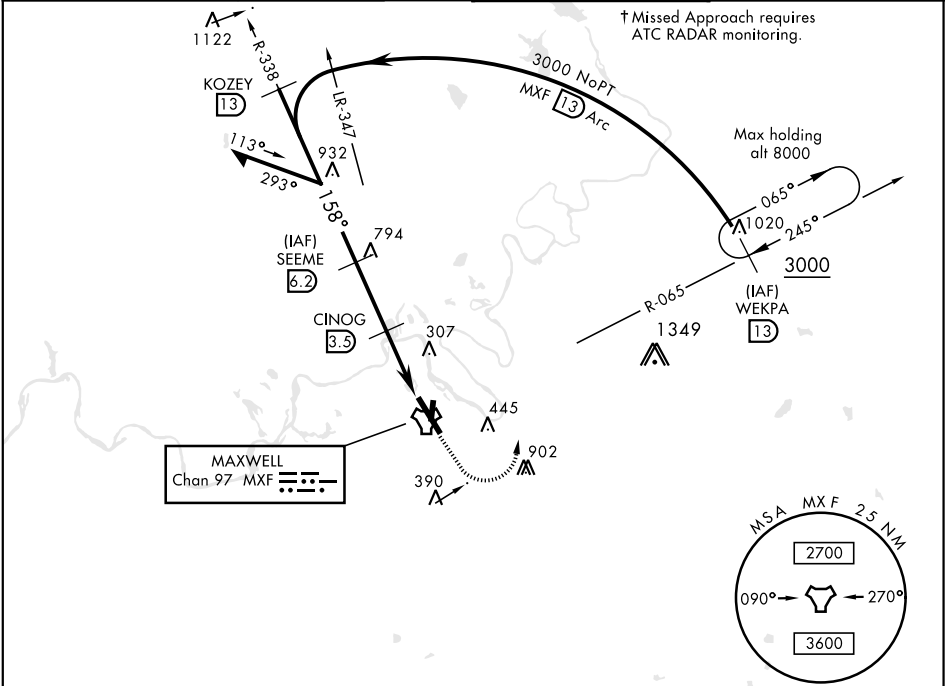
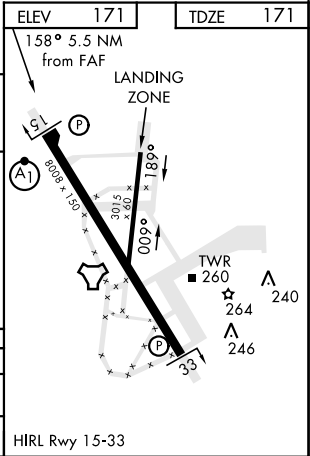


TACAN RWY 15

TACAN MXF Chan 97	APCH CRS 158°	Rwy ldg 8008 TDZE 171 Arpt Elev 171	AL-274 [USAF]	MAXWELL AFB (KMXF)
▼ * When ALS inop, increase CAT AB RVR to 55 and vis to 1 mile, CAT CDE RVR to 60 and vis to 1½ miles. ** Circling not authorized E of Rwy 15-33.			ALSF-1 A1	† MISSED APPROACH: Climb to 1000, then climbing left turn to 3000 to intercept MXF TACAN R-065 outbound to 13 DME (WEKPA) and hold.
ATIS ★ 134.7 269.9	MONTGOMERY APP CON 121.2 269.05	MAXWELL TOWER ★ 118.15 253.5	GND CON 127.15 289.4	



EMERG SAFE ALT 100 NM 5000



TACAN RWY 15