

LOC I-MSL 109.7	APP CRS 297°	Rwy Idg 6694
	TDZE 551	
	Apt Elev 551	

ILS Y or LOC Y RWY 30
NORTHWEST ALABAMA RGNL (MSL)

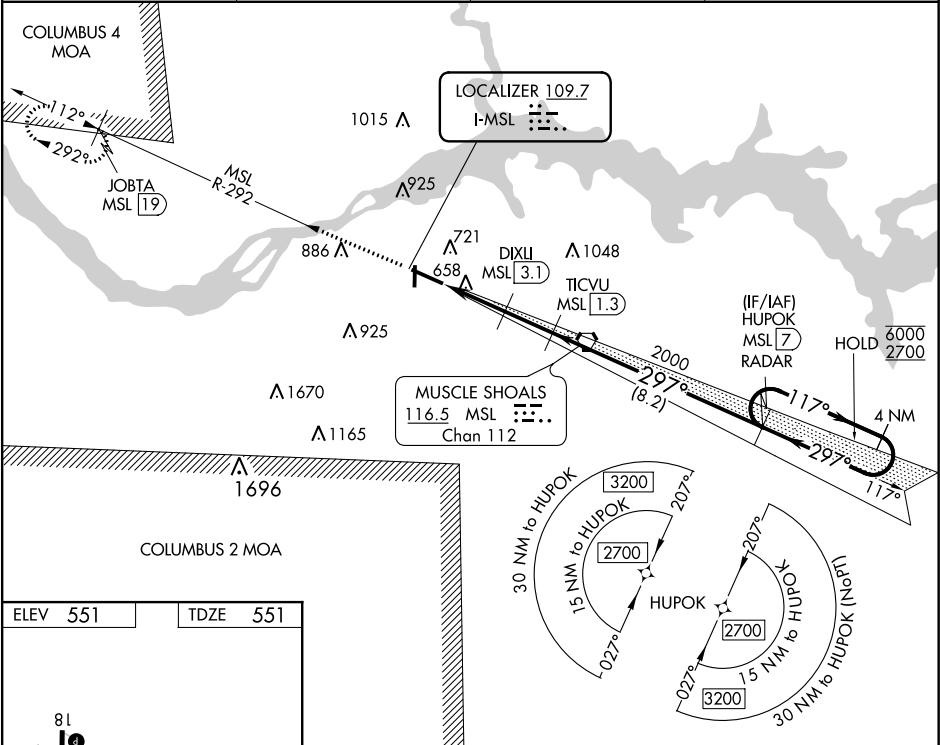
RNAV 1-GPS or RADAR required for procedure entry. DME required.

When local altimeter setting not received, use Decatur altimeter setting: Increase DA to 833 feet and all MDA 100 feet; Increase S-LOC 30 Cat C, D visibility $\frac{3}{8}$ SM and Circling Cat C, D visibility $\frac{1}{2}$ SM. DME from MSL VORTAC. Simultaneous reception of I-MSL and MSL DME required. For inop ALS increase S-LOC 30 Cats C/D visibility to 1 SM. For inop ALS when using Decatur altimeter setting, increase S-ILS 30 all Cats visibility to $\frac{3}{8}$ SM, and increase S-LOC 30 Cats C/D to $1\frac{3}{8}$ SM.

MALSR

MISSED APPROACH: Climb to 3000 on MSL VORTAC R-292 to JOBTA/MSL 19 DME and hold.

ASOS 119.425	MEMPHIS CENTER 120.8 307.0	GCO 121.725	UNICOM 123.05 (CTAF) 0
------------------------	--------------------------------------	-----------------------	----------------------------------



ELEV 551 TDZE 551

REIL Rwy 12 0
MIRL Rwy 18-36 0
HIRL Rwy 12-30 0

3000 ↑	MSL R-292	JOBTA MSL 19	4 NM Holding Pattern		
*LOC only.	<p>TICVU MSL 1.3 HUPOK MSL 7 DIXLI MSL 3.1 MSL 5.6 2000 297° 117° 6000 2700 2.5 1.9 NM 8.2 NM 1400 2000 GS 3.00° TCH 59</p>				
CATEGORY	A		B	C	D
S-ILS 30			751-½ 200 (200-½)		
S-LOC 30	920-½ 369 (400-½)		920-⅝ 369 (400-⅝)		
CIRCLING	1040-1 489 (500-1)		1280-2 729 (800-2)	1280-2¼ 729 (800-2¼)	

SE-4, 31 DEC 2020 to 28 JAN 2021

SE-4, 31 DEC 2020 to 28 JAN 2021