

LOC I-MSL <b>109.7</b>	APP CRS <b>297°</b>	Rwy Idg TDZE Apt Elev	<b>6694</b> <b>551</b> <b>551</b>
---------------------------	------------------------	-----------------------------	---

ILS Z or LOC Z RWY 30  
NORTHWEST ALABAMA RGNL (MSL)

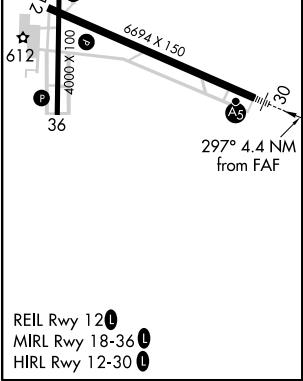
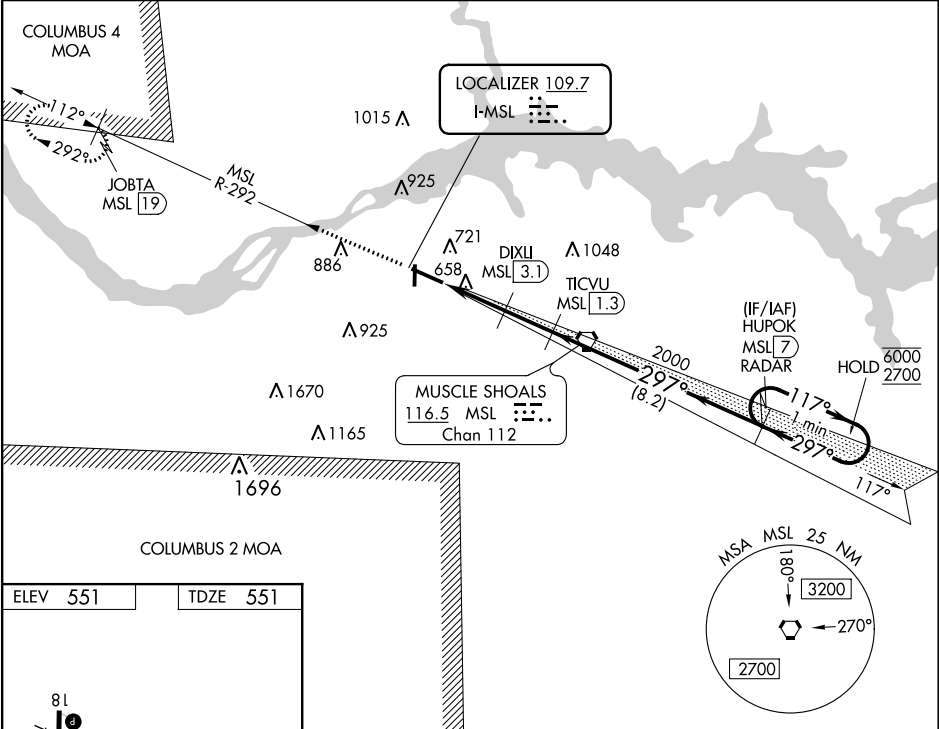
DME required. RADAR required for procedure entry.

When local altimeter setting not received, use Decatur altimeter setting: Increase DA to 833 feet and all MDA 100 feet; Increase S-LOC 30 Cat C, D visibility  $\frac{3}{8}$  SM and Circling Cat C, D visibility  $\frac{1}{2}$  SM. DME from MSL VORTAC. Simultaneous reception of I-MSL and MSL DME required. For inop ALS increase S-LOC 30 Cats C/D visibility to 1 SM. For inop ALS when using Decatur altimeter setting, increase S-LS 30 all Cats visibility to  $\frac{3}{8}$  SM, and increase S-LOC 30 Cats C/D to  $1\frac{1}{8}$  SM.

MALSR

MISSED APPROACH: Climb to 3000 on MSL VORTAC R-292 to JOBTA/MSL VORTAC 19 DME and hold.

ASOS <b>119.425</b>	MEMPHIS CENTER <b>120.8 307.0</b>	GCO <b>121.725</b>	UNICOM <b>123.05 (CTAF) 0</b>
------------------------	--------------------------------------	-----------------------	----------------------------------



3000	MSL R-292	JOBTA MSL 19	HUPOK MSL 7 RADAR	One Minute Holding Pattern
*LOC only.	DIXLI MSL 3.1	TICVU MSL 1.3	2000	297°
MSL 5.6	2.5	1.9 NM	8.2 NM	117°
2000	2000	2000	6000	2700
GS 3.00°	TCH 59			
CATEGORY	A	B	C	D
S-ILS 30	751- $\frac{1}{2}$	200 (200- $\frac{1}{2}$ )		
S-LOC 30	920- $\frac{1}{2}$	369 (400- $\frac{1}{2}$ )	920- $\frac{5}{8}$	369 (400- $\frac{5}{8}$ )
CIRCLING	1040-1	489 (500-1)	1280-2	1280-2 $\frac{1}{4}$
			729 (800-2)	729 (800-2 $\frac{1}{4}$ )

SE-4, 31 DEC 2020 to 28 JAN 2021

SE-4, 31 DEC 2020 to 28 JAN 2021