

WAAS CH <b>56435</b> <b>W18A</b>	APP CRS <b>184°</b>	Rwy Idg TDZE <b>547</b> Apt Elev <b>551</b>	<b>4000</b>
--	------------------------	---	-------------

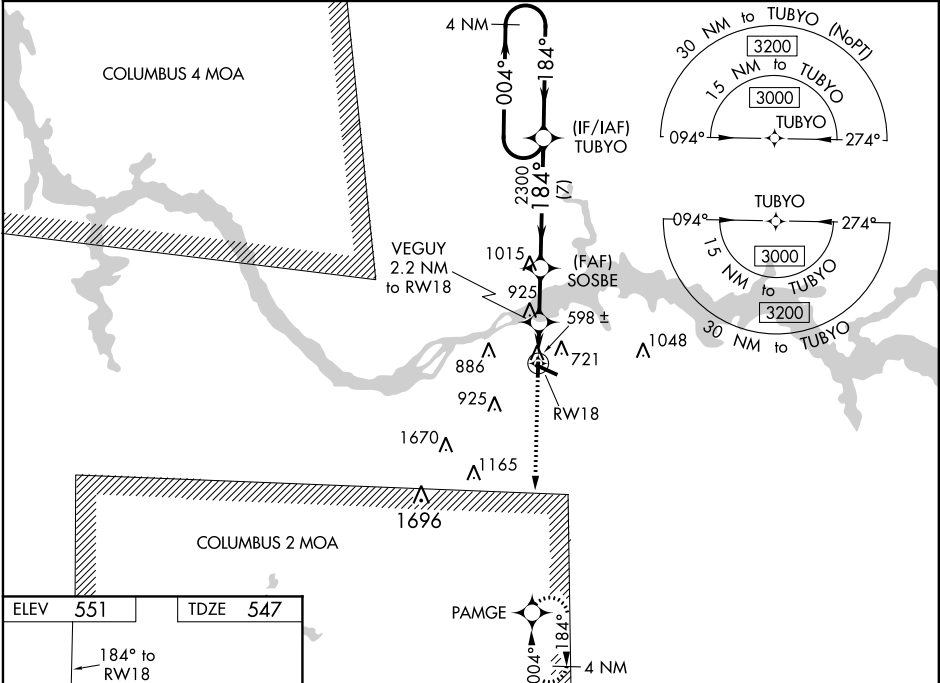
**RNAV (GPS) RWY 18**  
NORTHWEST ALABAMA RGNL (MSL)

RNP APCH.

Baro-VNAV NA when using Decatur altimeter setting. For uncompensated Baro-VNAV systems, LNAV/VNAV NA below -4°C (25°F) or above 54°C (130°F). Rwy 18 helicopter visibility reduction below 3/4 SM NA. When local altimeter setting not received, use Decatur altimeter setting and increase LPV DA to 880, LNAV/VNAV DA to 1065 and all MDA 100 feet, increase LNAV Cat C visibility 1/4 SM, increase Circling Cat C visibility 1/2 SM.

MISSED APPROACH:  
Climb to 3000 direct PAMGE and hold.

ASOS <b>119.425</b>	MEMPHIS CENTER <b>120.8 307.0</b>	GCO <b>121.725</b>	UNICOM <b>123.05 (CTAF) 0</b>
------------------------	--------------------------------------	-----------------------	----------------------------------



ELEV	<b>551</b>	TDZE	<b>547</b>
------	------------	------	------------

184° to RW18

3000 PAMGE

\*LNAV only.

VGSI and RNAV glidepath not coincident (VGSI Angle 3.00/TCH 35).

VEGUY 2.2 NM to RW18

SOSBE 2300

RW18

GP 3.15° TCH 57

4 NM Holding Pattern

CATEGORY	A	B	C	D
LPV DA	797-1	250 (300-1)		NA
LNAV/VNAV DA	982-1 3/8	435 (500-1 3/8)		NA
LNAV MDA	960-1	413 (500-1)	960-1 1/4 413 (500-1 1/4)	NA
CIRCLING	1040-1	489 (500-1)	1280-2 729 (800-2)	NA

REIL Rwy 12 0  
MIRL Rwy 18-36 0  
HIRL Rwy 12-30 0

SE-4, 31 DEC 2020 to 28 JAN 2021

SE-4, 31 DEC 2020 to 28 JAN 2021