
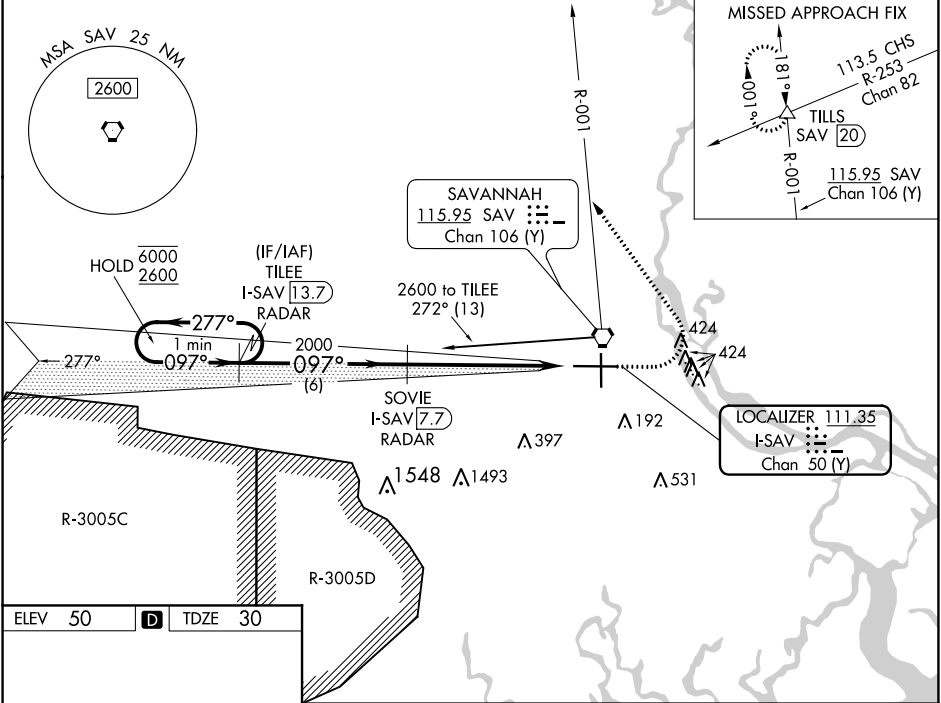


LOC I-SAV 111.35	APP CRS 097°	Rwy Idg TDZE 30
Chan 50 (Y)		Apt Elev 50

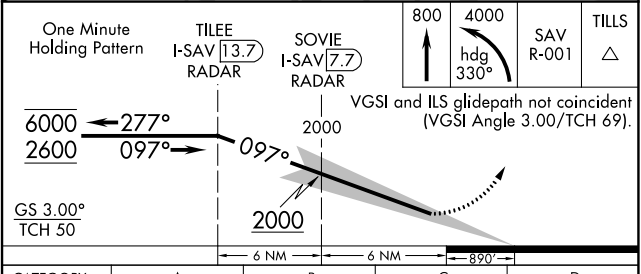
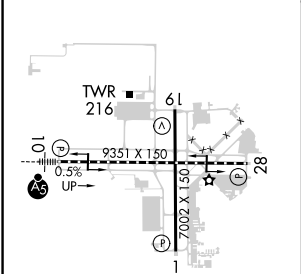
ILS RWY 10 (SA CAT I & II)
SAVANNAH/HILTON HEAD INTL (SAV)

DME required.	MALSR 	MISSED APPROACH: Climb to 800 then climbing left turn to 4000 on heading 330° and SAV VORTAC R-001 to TILLS INT/SAV 20 DME and hold.
SA CAT I: Requires specific OPSPEC, MSPEC, or LOA approval and use of HUD to DH. SA CAT II: Reduced lighting: Requires specific OPSPEC, MSPEC, or LOA approval and use of autoland or HUD to touchdown. Procedure NA when tower closed.		

ATIS 123.75	SAVANNAH APP CON★ 125.3 371.875	SAVANNAH TOWER★ 119.1(CTAF) 257.8	GND CON 121.9 348.6	CLNC DEL 119.55 291.775	UNICOM 122.95
-----------------------	---	---	-------------------------------	-----------------------------------	-------------------------



ELEV 50	D	TDZE 30
---------	----------	---------



CATEGORY	A	B	C	D
S-ILS 10	SA CAT I	RA 162/14	150 DA 180	
S-ILS 10	SA CAT II	RA 116/12	100 DA 130	

SA CATEGORY I & II ILS - SPECIAL AIRCREW & AIRCRAFT CERTIFICATION REQUIRED

SE-4, 31 DEC 2020 to 28 JAN 2021

SE-4, 31 DEC 2020 to 28 JAN 2021