

APP CRS
277°

Rwy Idg
TDZE
Apt Elev

9351
50
50

RNAV (RNP) Y RWY 28

SAVANNAH/HILTON HEAD INTL (SAV)

RNP AR APCH. At KELER, and MAYAR: (RNP 1.0). At ZELGI, FEXEM, and RLENE: (RNP 0.30).

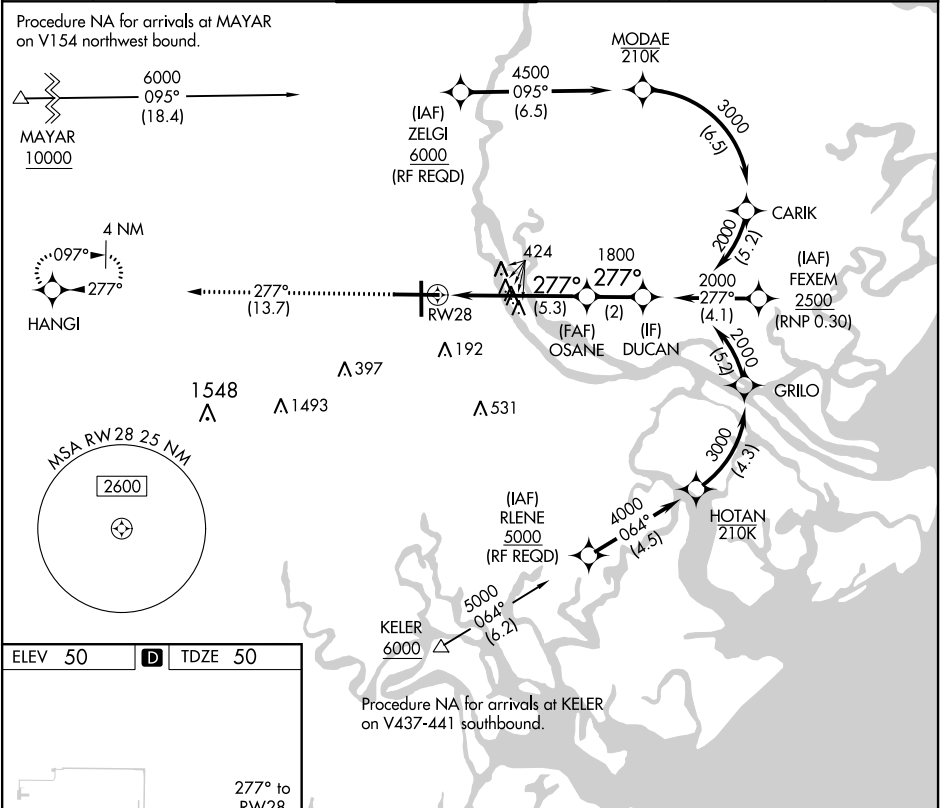
▼

▲

For uncompensated Baro-VNAV systems, procedure NA below -15°C or above 54°C.
When local altimeter setting not received, procedure NA.

MISSED APPROACH: Climb to 2500 on track 277° to HANGI and hold.

ATIS 123.75	SAVANNAH APP CON★ 125.3 371.875	SAVANNAH TOWER★ 119.1 (CTAF) 257.8	GND CON 121.9 348.6	CLNC DEL 119.55 291.775	UNICOM 122.95
----------------	------------------------------------	---------------------------------------	------------------------	----------------------------	------------------



ELEV 50

D

TDZE 50

TWR 216

6L

9351 X 150

7002 X 150

28

277° to RWY 28

2500

tr 277°

HANGI

VGSI and RNAV glidepath not coincident (VGSI Angle 3.00°/TCH 66).

DUCAN

OSANE

1800

2000

1800

GP 3.00°

TCH 52

CATEGORY	A	B	C	D
RNP 0.15 DA		404-1	354 (400-1)	
RNP 0.30 DA		471-1¼	421 (500-1¼)	

AUTHORIZATION REQUIRED