

LOM SV
335

APCH CRS
276°

Rwy ldg **11,375**
TDZE **41**
Arpt Elev **41**

AL-381 [USA]

HUNTER AAF (KSVN)

▼

* When ALSF inop, increase CAT AB vis to RVR 50, CAT CD to 2 miles.
** Circling NA N of Rwy 10-28 for CAT D.

ALSF-1

MISSED APPROACH: Climb to 1500, then climbing left turn to 2500 direct SV LOM and hold.

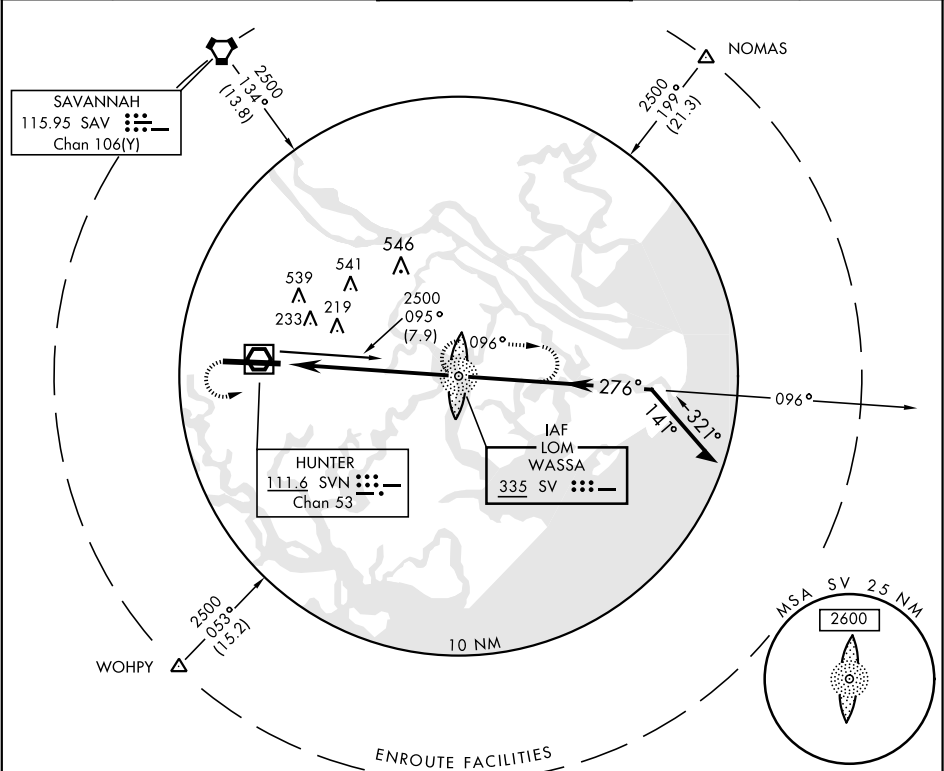
ATIS
127.525
323.125

SAVANNAH APP CON
120.4 353.775

HUNTER TOWER ★
124.975 (CTAF) **0 279.575**

GND CON
121.8 291.675

ASR/PAR



ELEV 41

TDZE 41

1500

2500

SV

WASSA LOM

Remain within 10 NM of SV LOM

096°

276°

2500

3.15°

TCH 54

7.2 NM

REIL Rwy 10

HIRL Rwy 10-28

FAF to MAP 7.2 NM

Knots	60	90	120	150	180
Min:Sec	7:12	4:48	3:36	2:53	2:24

184

182

TWR 97

11,375 x 197

276° 7.2 NM from SV LOM

REIL Rwy 10

HIRL Rwy 10-28

CATEGORY	A	B	C	D
S-28*	700/40 659 (700-¾)		700/60 659 (700-1¼)	700-1½ 659 (700-1½)
CIRCLING**	700-1 659 (700-1)		700-1¾ 659 (700-1¾)	700-2 659 (700-2)