

LOC/DME I-SEM <b>110.5</b> Chan <b>42</b>	APP CRS <b>329°</b>	Rwy Idg <b>8014</b> TDZE <b>165</b> Apt Elev <b>166</b>
---	------------------------	---

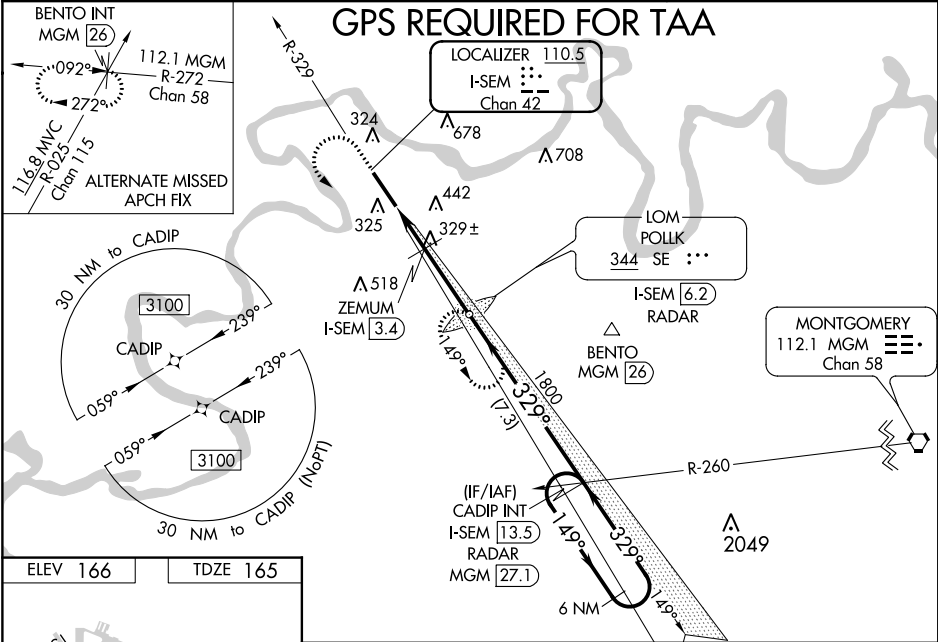
ILS Y or LOC Y RWY 33  
CRAIG FIELD (SEM)

▼ For inoperative MALS, increase S-LOC 33 Cat D visibility to 1½ mile. VDP NA with Montgomery altimeter setting. When local altimeter setting not received, use Montgomery altimeter setting and increase DA 78 feet, all MDA 80 feet, increase S-LOC 33 Cats C and D visibility ½ mile, Circling Cat C visibility ½ mile and Circling Cat D visibility ¼ mile, increase ZEMUM fix minimums S-LOC 33 Cats C and D visibility ½ mile and Circling Cat C visibility ½ mile and Circling Cat D visibility ¼ mile. For inoperative MALS, when using Montgomery altimeter setting, increase S-ILS 33 all Cats visibility to ¾ mile, S-LOC 33 Cats C and D visibility to 1¼ mile and increase ZEMUM fix minimums Cats C and D visibility to 1¾ mile. ADF required.

MALS  
A1

MISSED APPROACH: Climb to 1000 then climbing left turn to 3100 direct POLLK LOM/I-SEM 6.2 DME/RADAR and hold, continue climb-in-hold to 3100.

AWOS-3PT <b>119.15</b>	MONTGOMERY APP CON ★ <b>124.0 363.025</b>	UNICOM <b>122.7</b> (CTAF) 0
---------------------------	--	---------------------------------



ELEV 166	TDZE 165
FAF to MAP 4.7 NM	
Knots	60 90 120 150 180
Min:Sec	4:42 3:08 2:21 1:53 1:34
CATEGORY A B C D	
S-ILS 33 365-¾ 200 (200-¾)	
S-LOC 33 720-¾ 555 (600-¾) 720-1½ 555 (600-1½)	
CIRCLING 720-1 760-1 760-1½ 1040-2¾ 554 (600-1) 594 (600-1) 594 (600-1½) 874 (900-2¾)	
ZEMUM FIX MINIMUMS	
S-LOC 33 580-¾ 415 (500-¾) 580-1 415 (500-1)	
CIRCLING 660-1 760-1 760-1½ 1040-2¾ 494 (500-1) 594 (600-1) 594 (600-1½) 874 (900-2¾)	

SE-4, 31 DEC 2020 to 28 JAN 2021

SE-4, 31 DEC 2020 to 28 JAN 2021