

WAAS CH 90205 W33A	APP CRS 329°	Rwy Idg 8014 TDZE 165 Apt Elev 166
--	------------------------	---

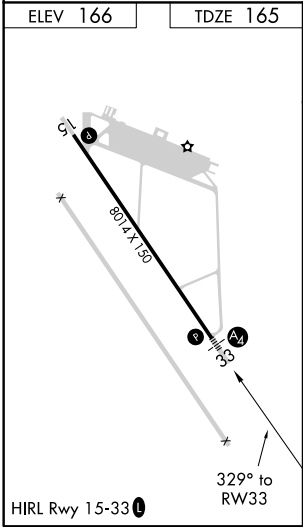
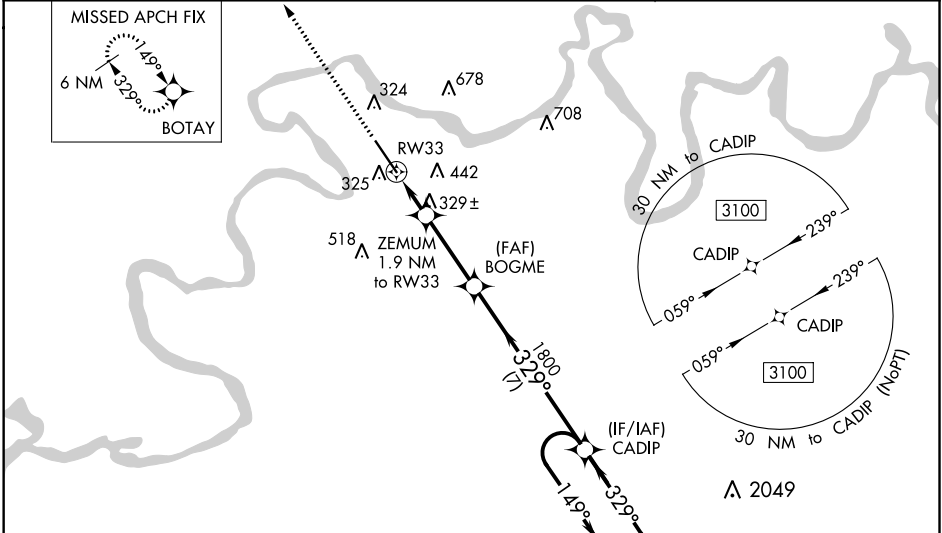
RNAV (GPS) RWY 33

CRAIG FIELD (SEM)

▼ Baro-VNAV NA when using Montgomery altimeter setting. For uncompensated Baro-VNAV systems, LNAV/VNAV NA below -15°C (5°F) or above 54°C (130°F). For inoperative MALS, increase LNAV/VNAV all Cats visibility to ¾ mile and LNAV Cats C and D visibility to 1 ½ mile. DME/DME RNP-0.3 NA. VDP NA with Montgomery altimeter setting. When local altimeter setting not received, use Montgomery altimeter setting and increase all DA 78 feet, all MDA 80 feet, LNAV Cats C and D visibility ½ mile and increase Circling Cat C visibility ½ mile and Cat D visibility ¼ mile. For inoperative MALS, when using Montgomery altimeter setting, increase LPV all Cats visibility to ¾ mile, LNAV/VNAV all Cats visibility to 1 mile, LNAV Cat C and D visibility to 1 ½ mile.

MALS	MISSED APPROACH: Climb to 2800 direct BOTAY and hold.
------	--

AWOS-3PT 119.15	MONTGOMERY APP CON ★ 124.0 363.025	UNICOM 122.7 (CTAF) 1
---------------------------	--	---------------------------------



2800	BOTAY	VGSI and RNAV glidepath not coincident (VGSI Angle 3.00/TCH 56).		6 NM Holding Pattern	
*LNAV only.		ZEMUM 1.9 NM to RW33	BOGME 1800	CADIP	
		*1.3 NM to RW22			
		RW33	820*	1800	
				149°→ 3100	
				← 329°	
				GP 3.00° TCH 55	
		1.3 NM	0.6 NM	3.1 NM	
				7 NM	
CATEGORY	A		B	C	D
LPV DA			365-¾	200 (200-¾)	
LNAV/ VNAV			462-¾	297 (300-¾)	
LNAV MDA	580-¾ 415 (500-¾)		580-1 415 (500-1)		
CIRCLING	660-1 494 (500-1)		760-1 594 (600-1)	760-1½ 594 (600-1½)	1040-2¾ 874 (900-2¾)