

VALDOSTA, GEORGIA

RNAV (GPS) RWY 18L

APCH CRS	Rwy Idg	9300
183°	TDZE	233
	Arpt Elev	233

AL-435 (USAF)

MOODY AFB (KVAD)

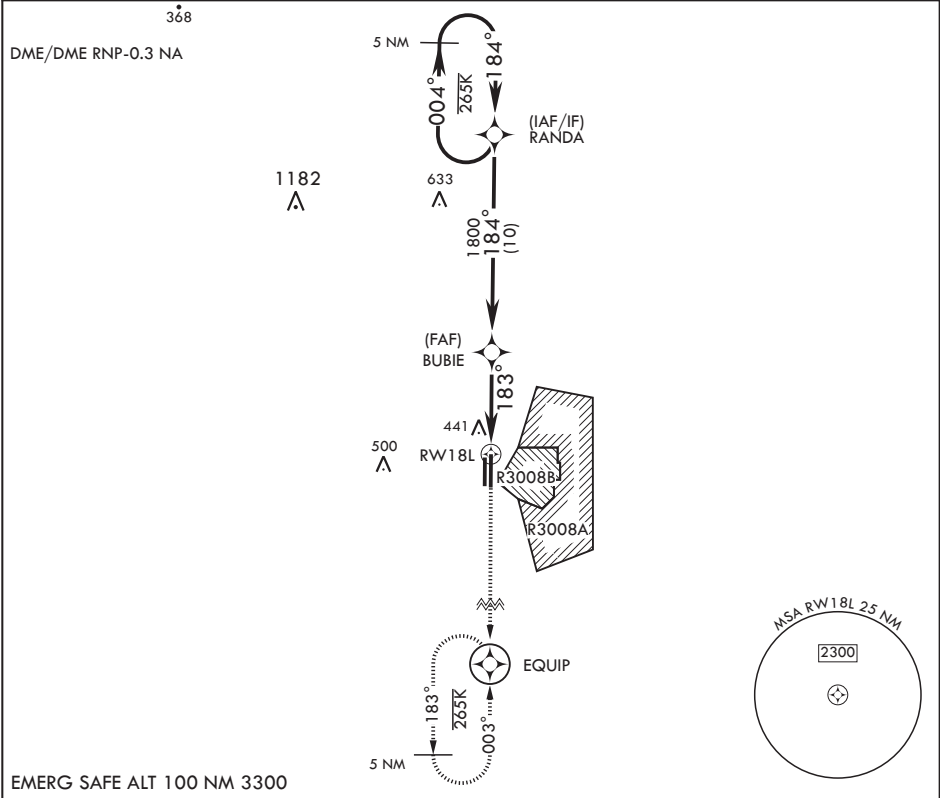
**⚠** \* When ALS inop, increase CAT AB RVR to 55 and vis to 1 mile, CAT CDE vis to 1 3/8 miles.

ALSF-1

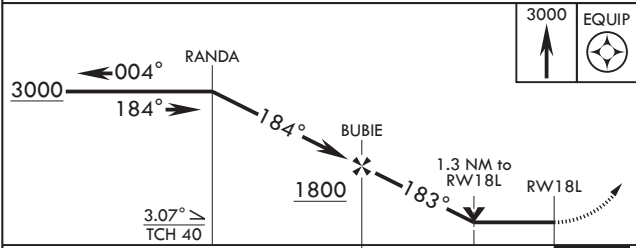


MISSED APPROACH: Climb to 3000 direct EQUIP and hold.

ATIS ★ 273.5	VALDOSTA APP CON 126.6 285.6	TOWER ★ 128.45 (CTAF) 257.625	GND CON 138.95 275.8	CLNC DEL 120.625 296.7
-----------------	---------------------------------	----------------------------------	-------------------------	---------------------------

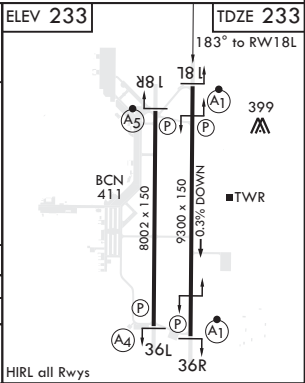


3000 EQUIP ELEV 233



TDZE 233

183° to RW18L



CATEGORY	A	B	C	D	E
LNAV MDA*	700/24 467 (500-1/2)		700/50 467 (500-1)		
<b>C</b> CIRCLING	760-1 527 (600-1)		760-1 1/2 527 (600-1 1/2)	800-2 567 (600-2)	1060-3 827 (900-3)

HIRL all Rwys

VALDOSTA, GEORGIA

30°58'N - 83°12'W

MOODY AFB (KVAD)

Amdt 1 10OCT19

RNAV (GPS) RWY 18L

SE-4, 31 DEC 2020 to 28 JAN 2021

SE-4, 31 DEC 2020 to 28 JAN 2021