

VALDOSTA, GEORGIA

RNAV (GPS) RWY 36R

APCH CRS	Rwy Idg	9300
003°	TDZE	217
	Arpt Elev	233

AL-435 (USAF)

MOODY AFB (KVAD)

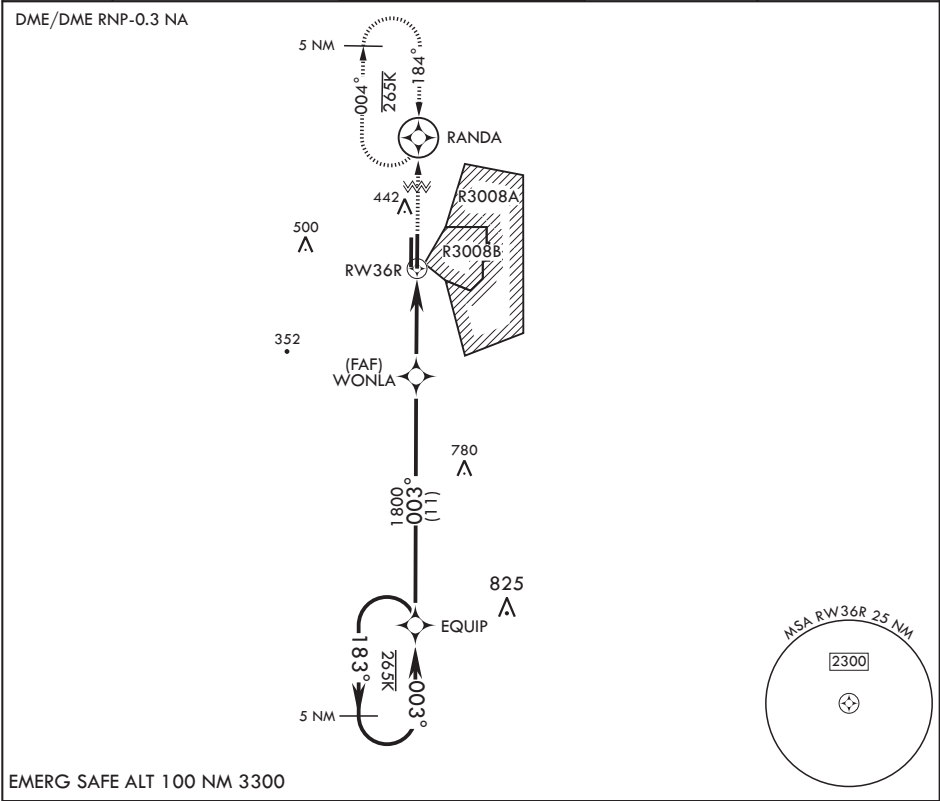
⚠ * When ALS inop, increase CAT AB RVR to 55 and vis to 1 mile, CAT CDE vis to 1 3/8 miles.

ALSF-1



MISSED APPROACH: Climb to 3000 direct to RANDA and hold.

ATIS ★ 273.5	VALDOSTA APP CON 126.6 285.6	TOWER ★ 128.45 (CTAF) 257.625	GND CON 138.95 275.8	CLNC DEL 120.625 296.7
-----------------	---------------------------------	----------------------------------	-------------------------	---------------------------



3000

183°

003°

EQUIP

WONLA

1800

1.3 NM to RW36R

RW36R

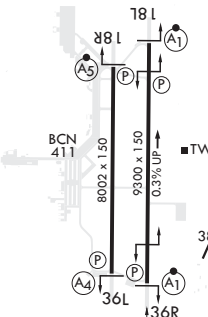
4.8 NM

3000

RANDA

ELEV 233

TDZE 217



BCN 411

8002 x 150

9300 x 150

0.3% UP

0.3% UP

36L

36R

003° to RW36R

CATEGORY	A	B	C	D	E
LNAV MDA*	680/24	463 (500-1/2)	680/50	463	(500-1)
C CIRCLING	760-1	527 (600-1)	760-1 1/2 527 (600-1 1/2)	800-2 567 (600-2)	1060-3 827 (900-3)

HIRL all Rwys

VALDOSTA, GEORGIA

30°58'N - 83°12'W

MOODY AFB (KVAD)

Amdt 1 10OCT19

RNAV (GPS) RWY 36R

SE-4, 31 DEC 2020 to 28 JAN 2021

SE-4, 31 DEC 2020 to 28 JAN 2021