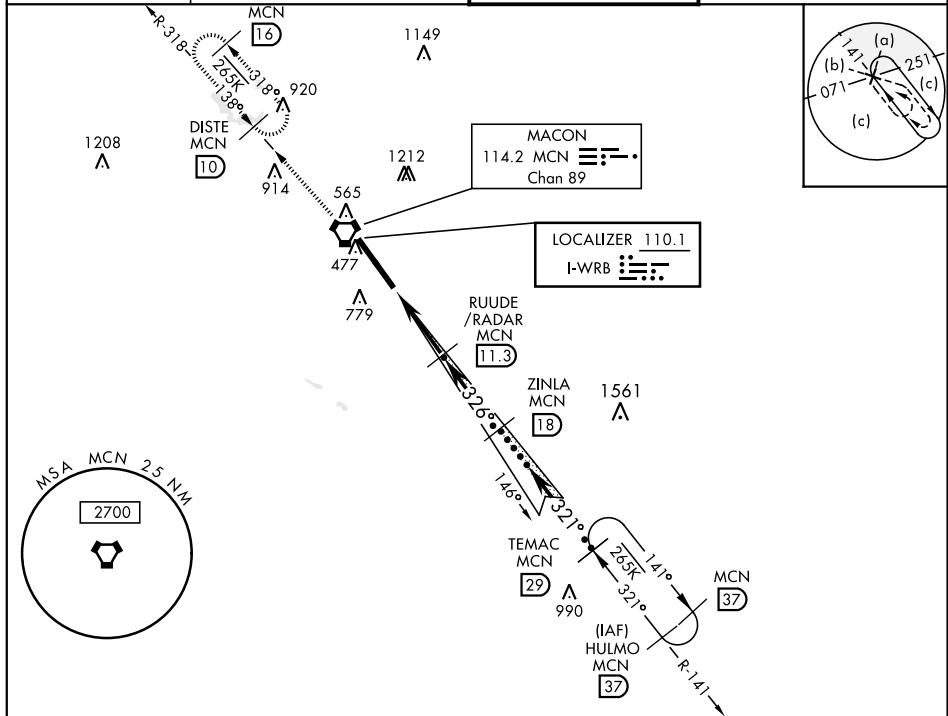


# HI-ILS or LOC RWY 33

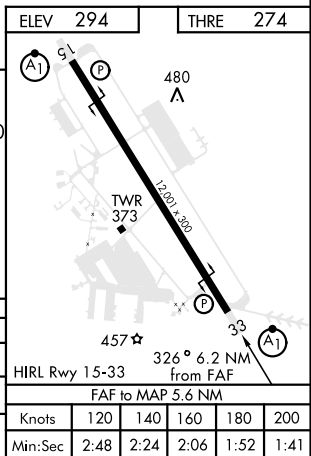
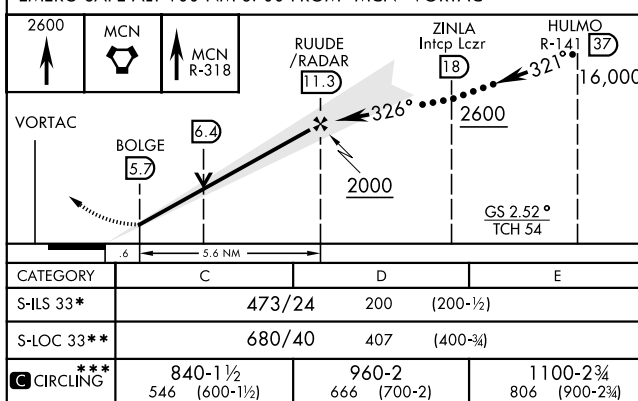
LOC I-WRB <b>110.1</b>	APCH CRS <b>326°</b>	Rwy Ldg THRE Arprt Elev <b>12,001</b> <b>274</b> <b>294</b>	JAL-442 [USAF]	ROBINS AFB (KWRB)
* When ALS inop, increase RVR to 40 and vis to ¾ mile. ** When ALS inop, increase CAT CD RVR to 60 and vis to 1 ½ miles, CAT E vis to 1 ½ miles. *** Circling not authorized W of Rwy 15-33.				ALSF-1 
MISSED APPROACH: Climb to 2600 to MCN VORTAC then out MCN R-318 to DISTE and hold.				

ATIS <b>119.475 273.475</b>	ATLANTA APP CON <b>124.2 279.6</b>	ROBINS TOWER <b>133.225 257.975</b>	GND CON <b>121.85 275.8</b>
--------------------------------	---------------------------------------	--	--------------------------------



## DME REQUIRED for LOC

EMERG SAFE ALT 100 NM 3700 FROM "MCN" VORTAC



# HI-ILS or LOC RWY 33