

HI-VOR/DME or TACAN RWY 15

VORTAC MCN 114.2 Chan 89	APCH CRS 134°	Rwy Idg 12,001 THRE 293 Arprt Elev 294
--	-------------------------	---

JAL-442 [USAF]

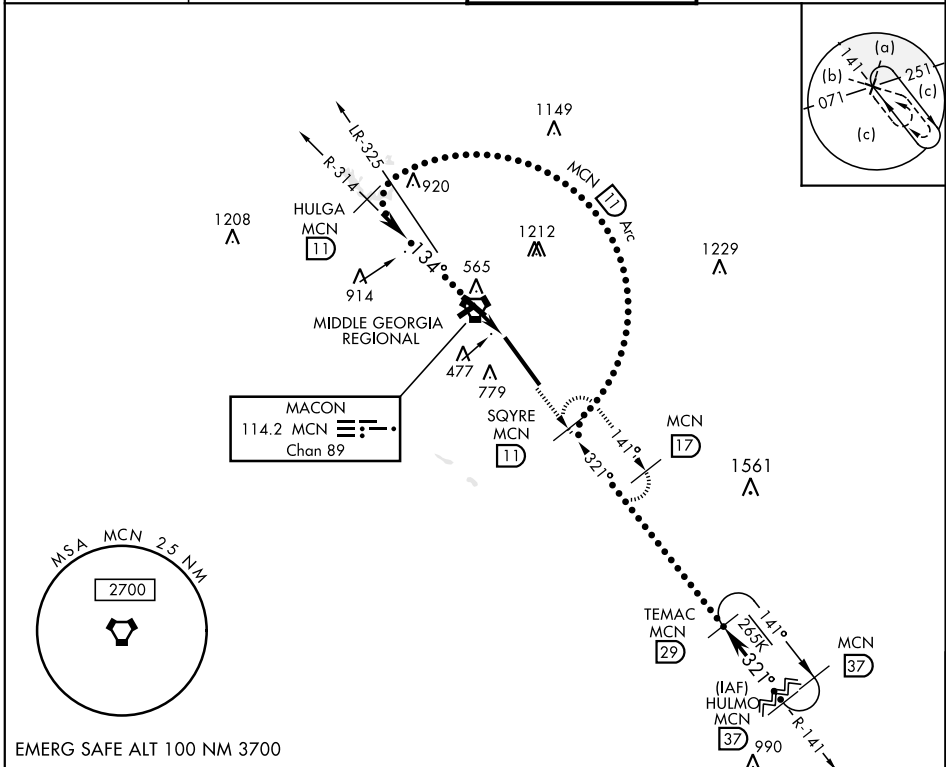
ROBINS AFB (KWRB)

* When ALS inop, increase CAT C vis to 1½ miles, CAT D vis to 1¾ miles, and CAT E vis to 2 miles.
** Circling not authorized W of Rwy 15-33.



MISSED APPROACH: Climb to 2700 out MCN R-141 to SQYRE and hold.

ATIS 119.475 273.475	ATLANTA APP CON 124.2 279.6	ROBINS TOWER 133.225 257.975	GND CON 121.85 275.8
--------------------------------	---------------------------------------	--	--------------------------------



<p>VGSI and descent angles not coincident</p> <p>HULGA R-314 11 Arc 4000 134° 1500 3.41° TCH 55</p> <p>SQYRE R-141 11 16,000 321°</p> <p>HULMO R-141 37 HEKNI 3</p> <p>VORTAC 134°</p> <p>2700 MCN R-141 SQYRE MCN 11</p>				ELEV 294	THRE 293												
<p>134° 3.2 NM from MCN VORTAC 480 A</p> <p>TWR 373</p> <p>HIRL Rwy 15-33 ☆457</p> <p>FAF to MAP 3.0 NM</p>				<table> <tr> <th>Knots</th><td>120</td><td>140</td><td>160</td><td>180</td><td>200</td></tr> <tr> <th>Min:Sec</th><td>1:30</td><td>1:17</td><td>1:08</td><td>1:00</td><td>0:54</td></tr> </table>		Knots	120	140	160	180	200	Min:Sec	1:30	1:17	1:08	1:00	0:54
Knots	120	140	160	180	200												
Min:Sec	1:30	1:17	1:08	1:00	0:54												
CATEGORY	C	D	E														
S-15 *	760/50	467	(500-1)														
CIRCLING **	840-1½ 546 (600-1½)	960-2 666 (700-2)	1100-2¾ 806 (900-2¾)														

HI-VOR/DME or TACAN RWY 15