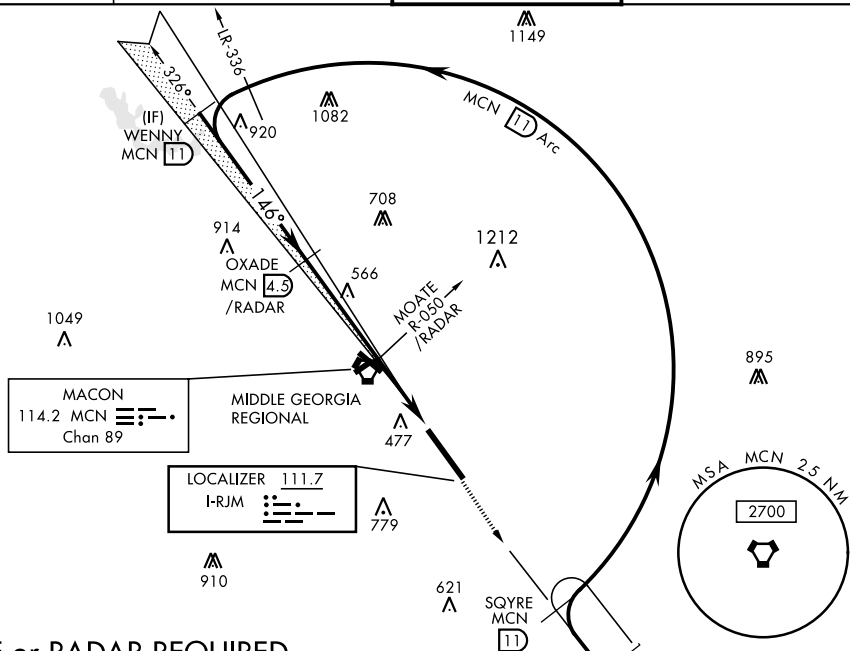


WARNER ROBINS, GEORGIA

ILS or LOC RWY 15

LOC I-RJM <u>111.7</u>	APCH CRS 146°	Rwy Idg 12,001 THRE Arpt Elev 293 294	AL-442 [USAF]	ROBINS AFB (KWRB)
* When ALS inop, increase RVR to 40 and vis to $\frac{3}{8}$ mile. ** When ALS inop, increase CAT AB RVR to 55 and vis to 1 mile, CAT CDE vis to $\frac{1}{8}$ miles. *** Circling not authorized W of Rwy 15-33.			ALSF-1 	MISSED APPROACH: Climb to 2700 out MCN R-141 to SQYRE and hold.

ATIS 119.475 273.475	ATLANTA APP CON 124.2 279.6	ROBINS TOWER 133.225 257.975	GND CON 121.85 275.8
-------------------------	--------------------------------	---------------------------------	-------------------------



DME or RADAR REQUIRED
VOR or TACAN REQUIRED

EMERG SAFE ALT 100 NM 3700

CATEGORY	A	B	C	D	E
S-ILS 15 *	493/24		200	(200-½)	
S-LOC 15 **	680/24	387 (400-½)	680/35		387 (400-¾)

Knots	60	90	120	150	180
Min:Sec	7:06	4:44	3:33	2:50	2:22

*** CIRCLING

WARNER ROBINS, GEORGIA

32°38'N-83°36'W

ROBINS AFB (KWRB)

Amdt 7 31JAN19

ILS or LOC RWY 15

SE-4, 31 DEC 2020 to 28 JAN 2021

SE-4, 31 DEC 2020 to 28 JAN 2021