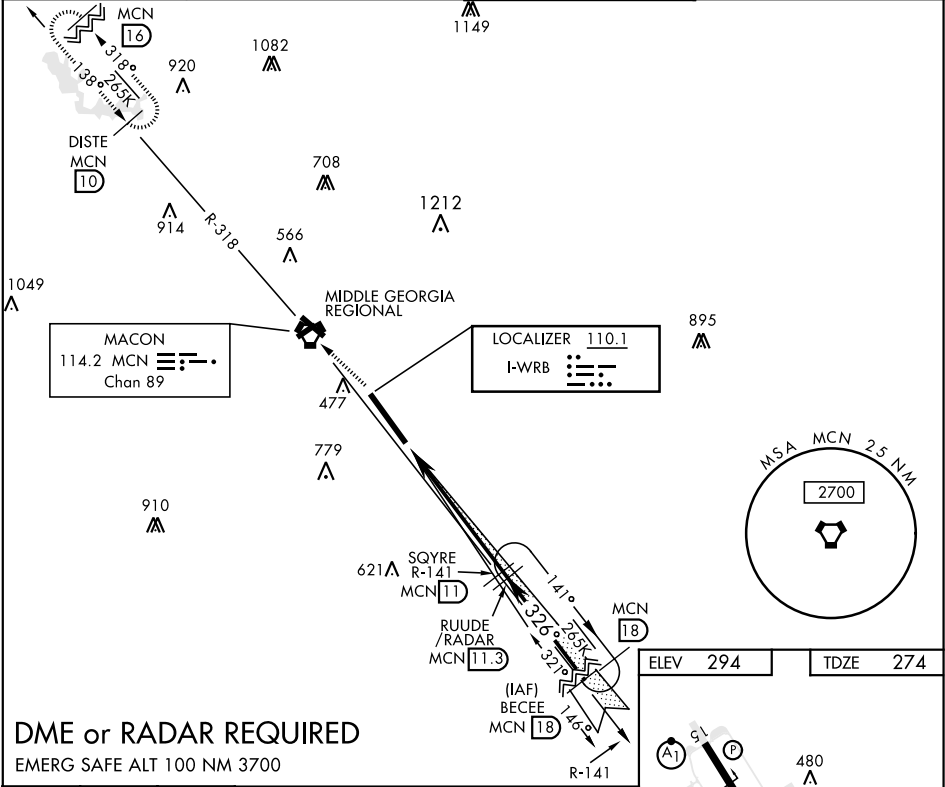


ILS or LOC RWY 33

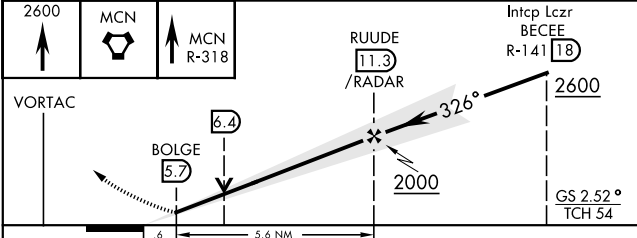
LOC I-WRB 110.1	APCH CRS 326°	Rwy ldg 12,001 TDZE 274 Arprt Elev 294	AL-442 [USAF]	ROBINS AFB (KWRB)
* When ALS inop, increase CAT ABCDE RVR to 40 and vis to ¾ mile. ** When ALS inop, increase CAT AB RVR to 55 and vis to 1 mile, CAT CDE RVR to 60 and vis to 1½ miles. *** Circling not authorized W of Rwy 15-33.			ALSF-1 	MISSED APPROACH: Climb to 2600 to MCN VORTAC then out MCN R-318 to DISTE and hold.

ATIS 119.475 273.475	ATLANTA APP CON 124.2 279.6	ROBINS TOWER 133.225 257.975	GND CON 121.85 275.8
--------------------------------	---------------------------------------	--	--------------------------------

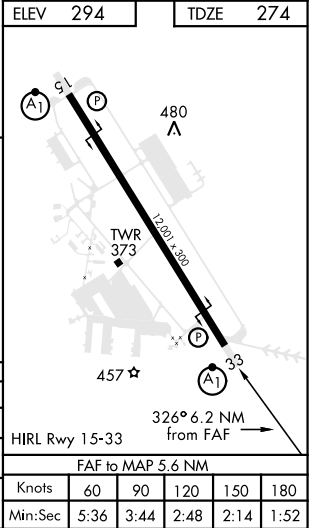


DME or RADAR REQUIRED

EMERG SAFE ALT 100 NM 3700



CATEGORY	A	B	C	D	E
S-ILS 33 *	473/24		200	(200-½)	
S-LOC 33 **	680/24	407 (400-½)	680/40	407	(400-¾)
*** CIRCLING	780-1	486 (500-1)	840-1½ 546 (600-1½)	960-2 666 (700-2)	1100-2¾ 806 (900-2¾)



ILS or LOC RWY 33

SE-4, 31 DEC 2020 to 28 JAN 2021

SE-4, 31 DEC 2020 to 28 JAN 2021