

WARNER ROBINS, GEORGIA

RNAV (GPS) RWY 15

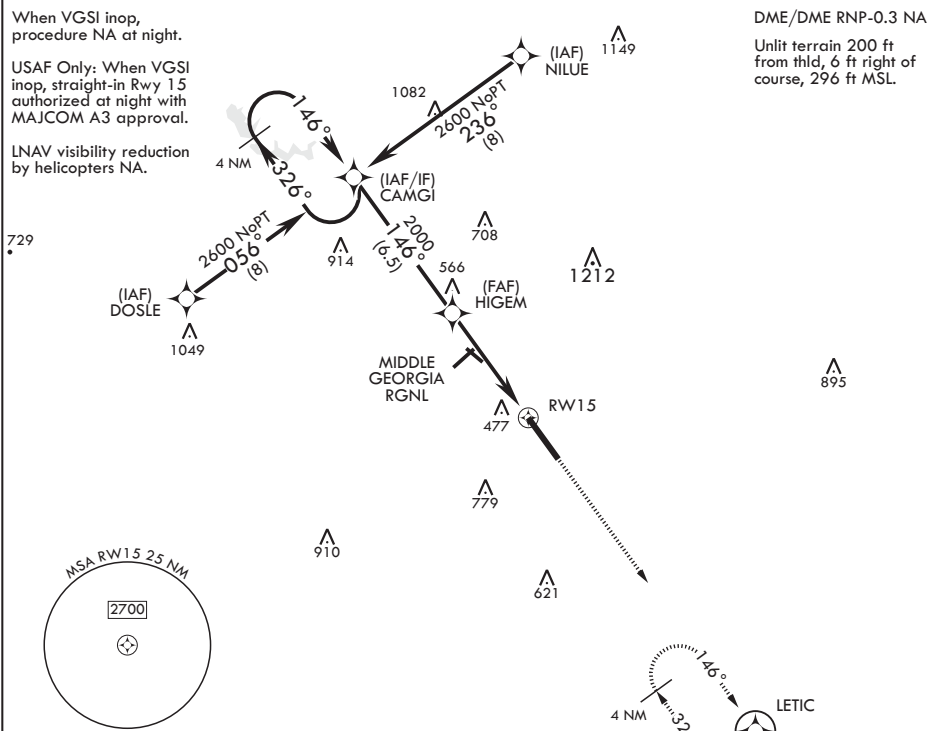
APCH CRS	Rwy Idg	12,001
146°	TDZE	293
	Arpt Elev	294

AL-442 (USAF)

ROBINS AFB (KWRB)

* When ALS inop, increase CAT AB RVR to 55, vis to 1 mile, CAT CDE vis to 1 5/8 miles. ** Circling NA SW of Rwy 15-33.		ALSIF-1 	MISSED APPROACH: Climb to 2700 direct LETIC and hold.
---	--	-------------	---

ATIS 119.475 273.475	ATLANTA APP CON/DEP CON 124.2 279.6	TOWER 133.225 257.975	GND CON 121.85 275.8
-------------------------	--	--------------------------	-------------------------



EMERG SAFE ALT 100 NM 3700

		VGSI and descent angle not coincident.	2700 ↑ LETIC	ELEV 294 146° to RWY 15	TDZE 293
3.11° TCH 55		RWY 15			
5 NM		12,001 x 300			
373		HIRL Rwy 15-33			
CATEGORY	A	B	C	D	E
LNAV MDA*	860/50	566 (600-1)	860-1 1/4	566 (600-1 1/4)	
CIRCLING**	860-1	567 (600-1)	860-1 5/8 567 (600-1 5/8)	960-2 667 (700-2)	1100-2 3/4 807 (900-2 3/4)

WARNER ROBINS, GEORGIA

32°38'N - 83°36'W

ROBINS AFB (KWRB)

Amtdt 4 31JAN19

RNAV (GPS) RWY 15

SE-4, 31 DEC 2020 to 28 JAN 2021

SE-4, 31 DEC 2020 to 28 JAN 2021