

# VOR/DME or TACAN RWY 33

VORTAC MCN <b>114.2</b> Chan <b>89</b>	APCH CRS <b>318°</b>	Rwy Idg <b>12,001</b> THRE <b>274</b> Arpt Elev <b>294</b>
--	-------------------------	--

AL-442 [USAF]

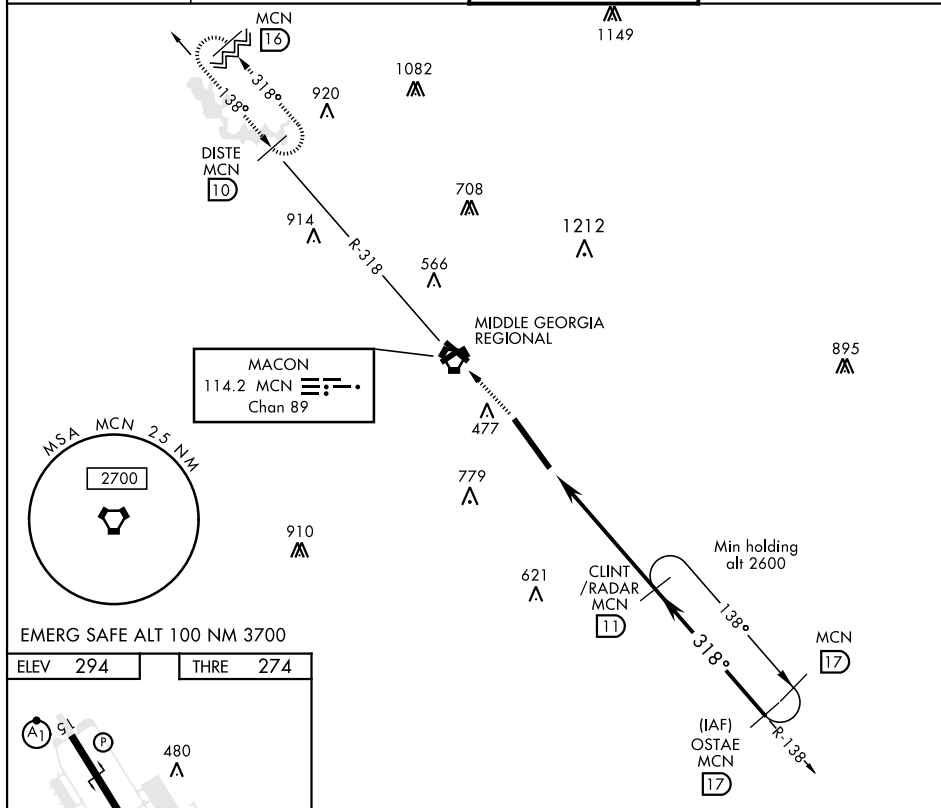
ROBINS AFB (KWRB)

\* When ALS inop, increase CAT AB RVR to 55 and vis to 1 mile,  
CAT CDE vis to 1½ miles.  
\*\* Circling not authorized W of Rwy 15-33.

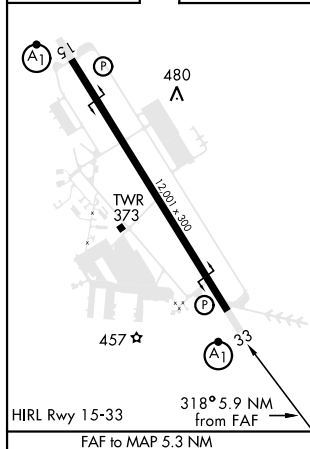



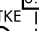
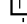


MISSED APPROACH: Climb to 2600 to  
MCN VORTAC then out MCN R-318 to  
DISTE and hold.

ATIS <b>119.475 273.475</b>	ATLANTA APP CON <b>124.2 279.6</b>	ROBINS TOWER <b>133.225 257.975</b>	GND CON <b>121.85 275.8</b>
--------------------------------	---------------------------------------	--	--------------------------------



EMERG SAFE ALT 100 NM 3700			
ELEV	294		THRE 274



2600 ↑	MCN 	MCN R-318 ↑			
VORTAC 	NOTKE 	6.8 ↓	CLINT /RADAR 	OSTAE R-138 	
	5.7 ↓	318°	318°	318°	
	6	5.3 NM	2000	2600	
				2.68° TCH 56	
CATEGORY	A	B	C	D	E
S-33 *	780/24	507 (500-½)	780/55	507 (500-1)	
 CIRCLING **	780-1	486 (500-1)	840-1½ 546 (600-1½)	960-2 666 (700-2)	1100-2¾ 806 (900-2¾)

# VOR/DME or TACAN RWY 33