
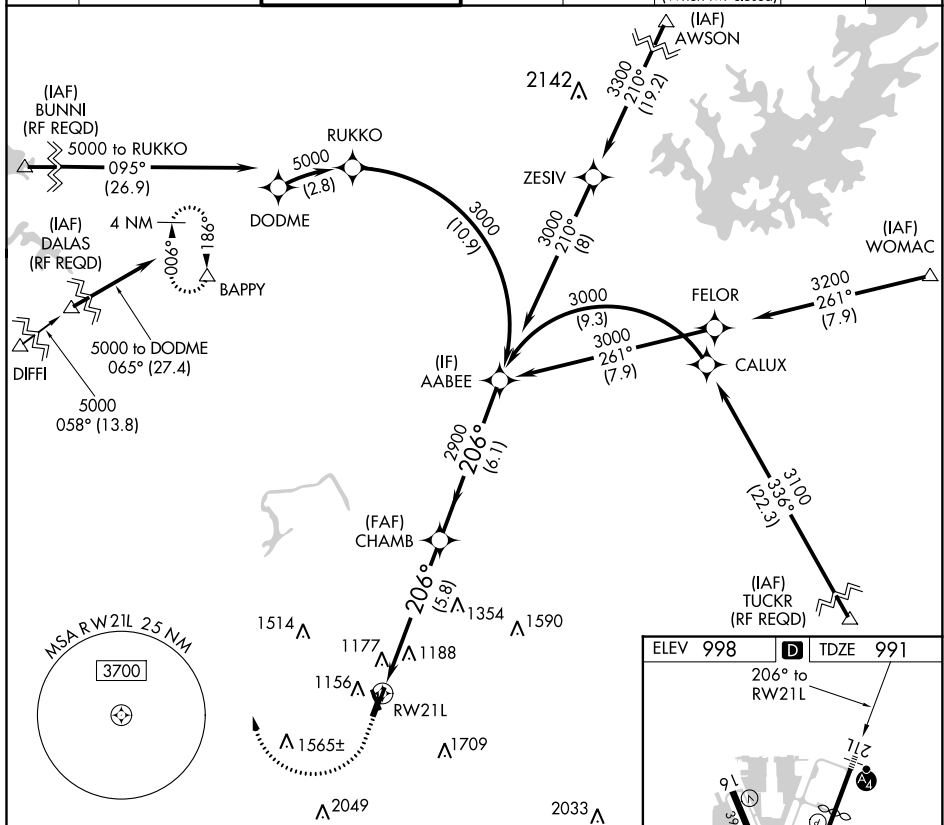


RNAV (RNP) Z RWY 21L
DEKALB-PEACHTREE (PDK)

<p>T For uncompensated Baro-VNAV systems, procedure NA below 1°C (37°F) or above 54°C (130°F). For inop MALSF, increase RNP 0.30 all Cots visibility to 1¼. GPS required.</p>	<p>MALSF</p> 	<p>MISSED APPROACH: Climb to 1800 then climbing right turn to 4000 direct BAPPY and hold.</p>
--	--	---

ATIS 128.4	ATLANTA APP CON 126.975 239.275	PEACHTREE TOWER ★ 120.9 (CTAF) 281.5	GND CON 121.6	CLNC DEL 125.2	CLNC DEL 120.9 (When twr closed)	UNICOM 122.95	120.0
---------------	------------------------------------	---	------------------	-------------------	--	------------------	---



1800 ↑	4000 ↗	BAPPY △				
CATEGORY RNP 0.30 DA			A	B	C	D
			1502-1 $\frac{3}{8}$ 511 (600-1 $\frac{3}{8}$)			
AUTHORIZATION REQUIRED						

ELEV 998

TDZE 991

206° to RW21L

9L

3988 X 150

TWR 1133

0.4%

3745 X 150

3L 3R

21R

4000 X 100

7L

34

HIRL Rwy 3R-21L

MIRL Rws 16-34 and 3L-21R

REIL Rws 3R and 34

SE-4, 31 DEC 2020 to 28 JAN 2021

SE-4. 31 DEC 2020 to 28 JAN 2021