

APP CRS	Rwy Idg	4996
221°	TDZE	991
	Apt Elev	998

RNAV (GPS) Y RWY 21L
DEKALB-PEACHTREE (PDK)

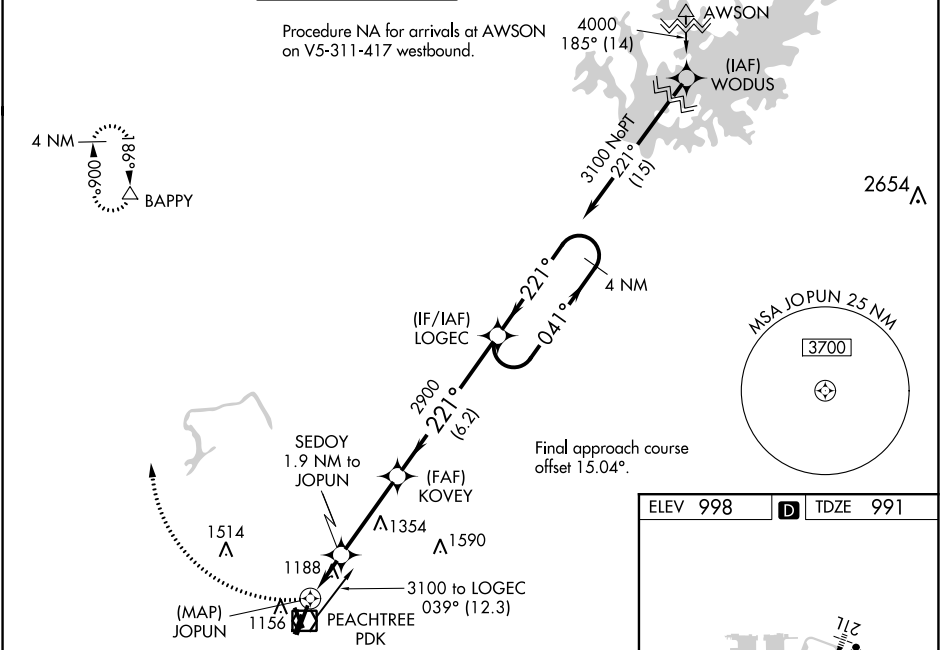
RNP APCH.

⚠ Circling Rwy 16, 34 NA at night. Baro-VNAV NA when using Fulton County Executive/ Charlie Brown Field altimeter setting. For uncompensated Baro-VNAV systems, LNAV/VNAV NA below 1°C or above 54°C. Rwy 21 helicopter visibility reduction below ¾ SM NA. For inop MALSF, increase LNAV/VNAV all Cats visibility to 1½ mile and LNAV Cats C/D visibility to 1½ mile. When local altimeter not received, use Fulton County Executive/Charlie Brown Field altimeter setting and increase LNAV/VNAV all Cats DA to 1505 and all MDA 60 feet; increase LNAV/VNAV all Cats visibility ½ mile, LNAV Cats C/D visibility ½ mile and Circling Cat C visibility ¼ mile. VDP NA when using Fulton County Airport-Brown Field altimeter setting. For inop MALSF when using Fulton County Executive/Charlie Brown Field altimeter setting, increase LNAV/VNAV Cat D visibility to 2 miles and LNAV Cat D visibility to 1½ mile.

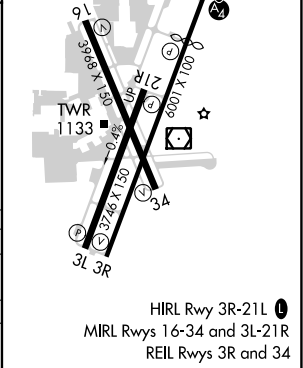
MALSF

MISSED APPROACH:
Climbing right turn to 4000 direct BAPPY and hold.

ATIS	ATLANTA APP CON	PEACHTREE TOWER★	GND CON	CLNC DEL	CLNC DEL	UNICOM	120.00
128.4	126.975 239.275	120.9 (CTAF) 281.5	121.6	125.2	120.9 (When twr closed)	122.95	



4000	BAPPY	SED	KOV	LOGEC	4 NM
△		1.9 NM to JOPUN	2900	Holding Pattern	
*LNAV only.		*1 NM to JOPUN			
JOPUN		1780*	2900	041° → 3100	GP 3.00° TCH 58
0.4	1 NM	0.9 NM	3.5 NM	6.2 NM	
CATEGORY	A	B	C	D	
LNAV/VNAV	DA	1461-1¼	470 (500-1¼)		
LNAV MDA	1500-¾	509 (600-¾)	1500-1¼	509 (600-1¼)	
CIRCLING	1580-1	582 (600-1)	1840-2½	2060-3	
			842 (900-2½)	1062 (1100-3)	



SE-4, 31 DEC 2020 to 28 JAN 2021

SE-4, 31 DEC 2020 to 28 JAN 2021