

WAAS
CH **48906**
W04A

APP CRS
041°

Rwy Idg
TDZE **159**
Apt Elev **170**

RNAV (GPS) RWY 4

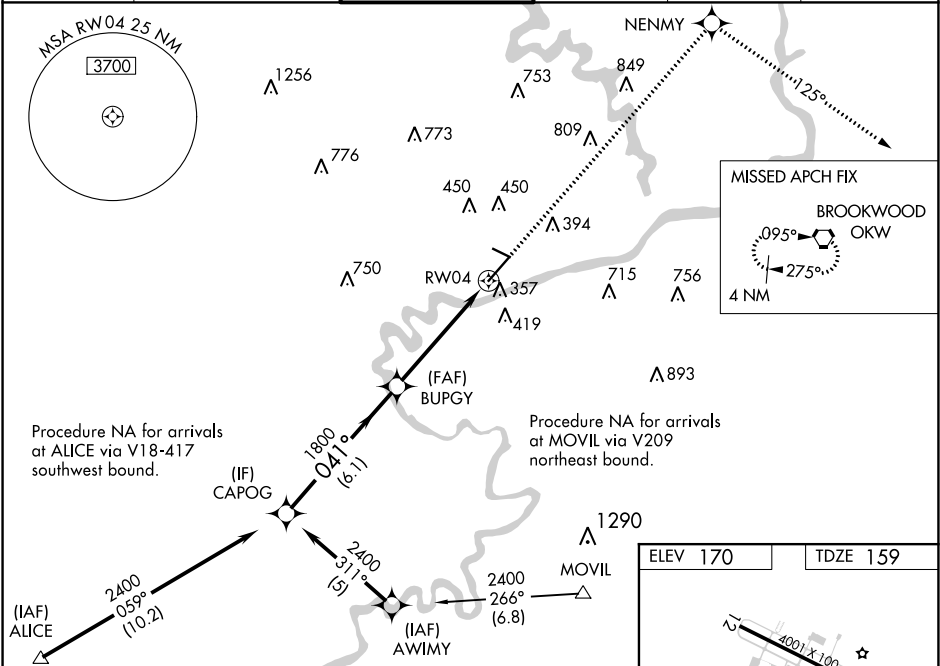
TUSCALOOSA NATIONAL (TCL)

▼ For uncompensated Baro-VNAV systems, LNAV/VNAV NA below -15°C (5°F) or above 48°C (119°F). DME/DME RNP-0.3 NA. Helicopter visibility reduction below ¾ SM NA. When local altimeter setting not received, use Birmingham altimeter setting and increase LPV and LNAV/VNAV DA 177 feet, all MDAs 180 feet, LPV all Cats visibility ¼ mile, LNAV/VNAV all Cats visibility ¾ mile, LNAV Cats C and D visibility ½ mile, Circling Cat B visibility ¼ mile, and Cats C and D visibility ½ mile. VDP and Baro-VNAV NA when using Birmingham altimeter setting. For inop MALSR, increase LNAV Cats A and B visibility ¼ mile. For inop MALSR, when using Birmingham altimeter setting; increase LPV all Cats visibility ½ mile, and LNAV Cat A and B visibility ¼ mile. Night landing: Rwy 12, 30 NA.

MALSR

MISSED APPROACH: Climb to 2500 direct NENMY then on track 125° to OKW VORTAC and hold.

ASOS 132.825	BIRMINGHAM APP CON 120.15 269.25	TUSCALOOSA TOWER ★ 126.3 (CTAF) 0 256.7	GND CON 121.8 257.95	CLNC DEL 120.775	UNICOM 122.95
------------------------	--	--	--------------------------------	----------------------------	-------------------------



Procedure Turn NA		2400	041°	1800	2500	NENMY	125°	OKW
GP 3.00°		TCH 45						
		6.1 NM	3.5 NM	1.5				
CATEGORY	A	B	C	D				
LPV DA		409-¾	250 (300-¾)					
LNAV/VNAV DA		608-1	449 (500-1)					
LNAV MDA	680-¾	521 (600-¾)	680-1	521 (600-1)				
CIRCLING	720-1 550 (600-1)	800-1 630 (700-1)	800-1¾ 630 (700-1¾)	800-2 630 (700-2)				