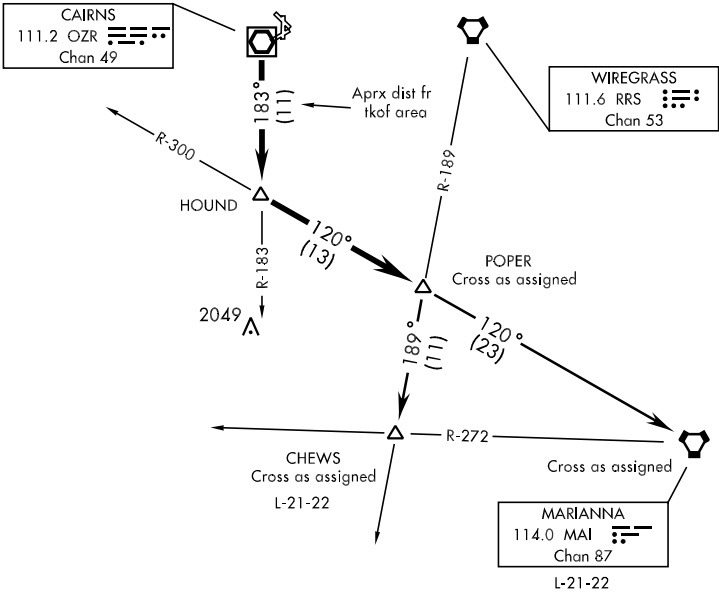


ATIS 111.2 316.15
CLNC DEL
118.075 380.1
GND CON
121.9 288.25
CAIRNS TOWER ★
135.2 (CTAF) 248.55
DEP CON
133.75 270.35
JACKSONVILLE CENTER
120.2 346.4

SL-577 [USA]



DEPARTURE ROUTE DESCRIPTION

TAKE-OFF RWY 6, 18 or 36: Climbing right turn heading 205°
TAKE-OFF RWY 24: Climbing left turn heading 120°
TAKE-OFF PAD C OR G: Climb heading 178° to 1000, then right turn heading 205
.... to intercept OZR VOR/DME R-183 to HOUND INT, and via MAI VORTAC R-300 to POPER INT. Thence via assigned Transition. Maintain 2000, expect clearance to requested altitude/flight level ten (10) minutes after departure.

CHEWS TRANSITION: (POPER 1•CHEWS) Proceed via RRS VORTAC R-189 to CHEWS INT.
MARIANNA TRANSITION: (POPER 1•MAI) Proceed via MAI R-300 to MAI VORTAC.