
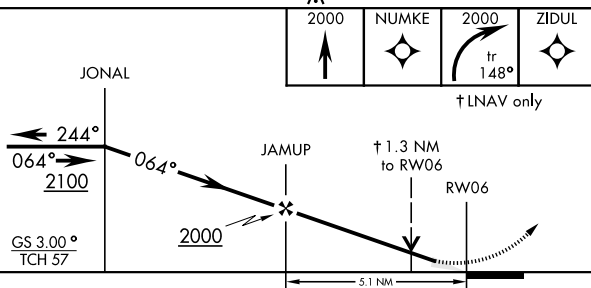
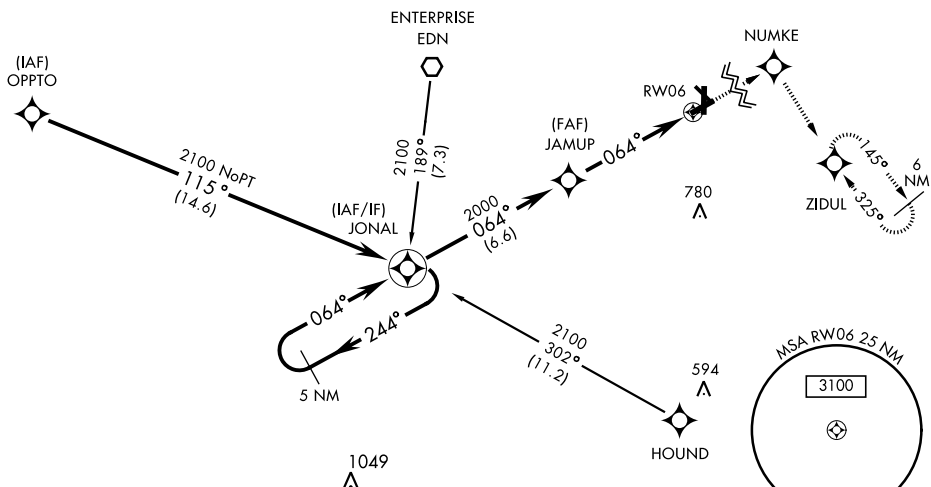


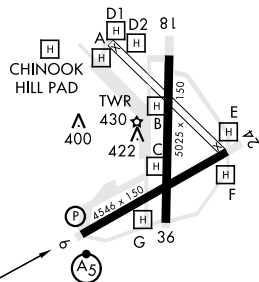
RNAV (GPS) RWY 6

WAAS CH 50537 W06A		APCH CRS 064°	Rwy Idg 4546 TDZE 298 Arpt Elev 301	AL-577 [USA]		CAIRNS AAF (KOZR)	
DME/DME RNP-0.3 NA				MALSR 	MISSED APPROACH: Climb to 2000 direct NUMKE then climbing right turn on track 148° to ZIDUL and hold.		
▼ * When ALS inop, increase LNAV/VNAV visibility to RVR 40, increase LNAV CAT AB visibility to RVR 55 and CAT CD vis to 1½ miles.							
ATIS 111.2 316.15	CAIRNS APP CON 021°-120° 125.4 327.125 121°-219° 133.75 270.35 220°-340° 133.45 239.275 341°-020° 121.1 319.25			CAIRNS TOWER ★ 135.2 (CTAF) 248.55	GND CON 121.9 288.25	CLNC DEL 118.075 380.1	PAR

For uncompensated BARO-VNAV systems,
LNAV/VNAV NA below -5°C (23°F) or above 54°C (130°F).



CATEGORY	A	B	C	D
LPV DA	498/24	200	(200-½)	
RNAV/VNAV DA *	560/24	262	(300-½)	
RNAV MDA *	760/24	462 (500-½)	760/50	462 (500-1)
C CIRCLING	780-1 479 (500-1)	820-1 519 (600-1)	860-1½ 559 (600-1½)	900-2 599 (600-2)



HIRL Rwy 6-24
MIRL Rwy 18-3