

VOR RWY 6

VOR/DME OZR 111.2 Chan 49	APCH CRS 056°	Rwy Idg TDZE Arprt Elev 4546 298 301	AL-577 [USA]	CAIRNS AAF (KOZR)
---------------------------------	------------------	---	--------------	-------------------

Visibility reduction by helicopters NA.

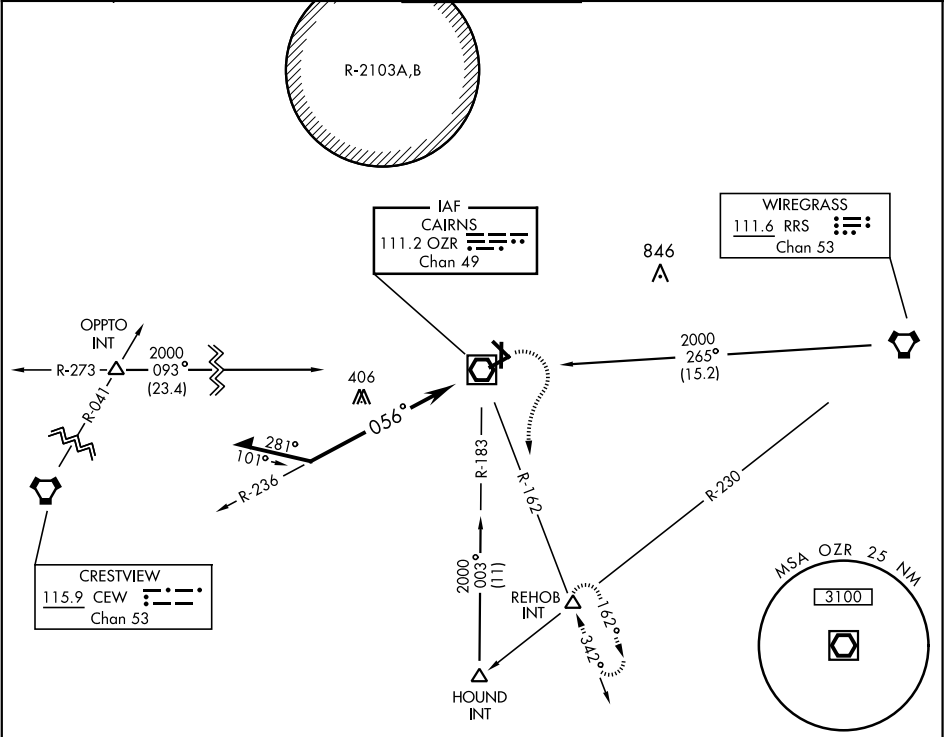
\* When ALS inop, increase CAT AB RVR to 50, vis to 1 mile; CAT CD RVR to 60, vis to 1¼ miles.

MALSR

A5

MISSED APPROACH: Climbing right turn to 2000 via OZR VOR/DME R-162 to REHOB INT and hold; or when directed by ATC, climbing left turn to 2000 heading 290° within 10 NM (RADAR required).

ATIS 111.2 316.15	CAIRNS APP CON 125.4 327.125 021°-120° 133.75 270.35 121°-219° 133.45 239.275 220°-340° 121.1 319.25 341°-020°	CAIRNS TOWER ★ 135.2 (CTAF) 248.55	GND CON 121.9 288.25	CLNC DEL 118.075 380.1	PAR
-------------------------	--	--	----------------------------	------------------------------	-----



ELEV 301 TDZE 298

2000 OZR R-162 REHOB INT

Remain within 10 NM

VOR/DME

2000 236° 056°

CATEGORY	A	B	C	D
S-6 *	740/40 442 (500-¾)			
CIRCLING	780-1 479 (500-1)	820-1 519 (600-1)	860-1½ 559 (600-1½)	900-2 599 (600-2)

CHINOOK HILL PAD

TWR 430 422

4546 x 150

3025 x 150

36

056° to VOR/DME

HIRL Rwy 6-24 MIRL Rwy 18-36

VOR RWY 6

SE-4, 31 DEC 2020 to 28 JAN 2021

SE-4, 31 DEC 2020 to 28 JAN 2021