

WAAS CH 69604 W22A	APP CRS 225°	Rwy Idg TDZE Apt Elev	5498 242 264
--	------------------------	-----------------------------	---

RNAV (GPS) RWY 22

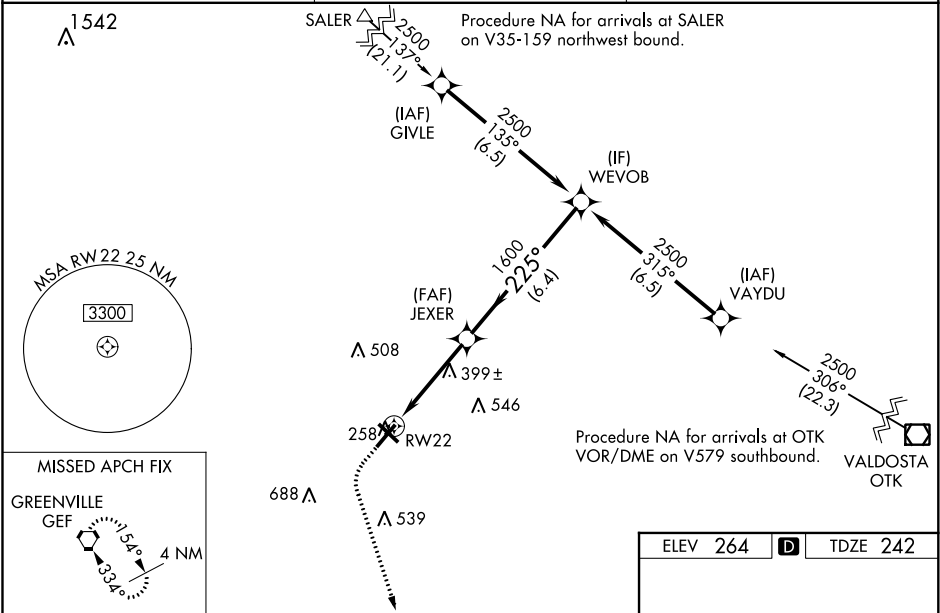
THOMASVILLE RGNL (TVI)

For uncompensated Baro-VNAV systems, LNAV/VNAV NA below -15°C (5°F) or above 53°C (127°F). DME/DME RNP-0.3 NA. When local altimeter setting not received, use Valdosta altimeter setting and increase LPV DA to 595, LNAV/VNAV DA to 613 and all MDA 100 feet. Increase LPV all Cats visibility to ¾ SM, LNAV/VNAV all Cats visibility to 1 SM, and increase LNAV Cat C/D visibility to 1 ¼ SM. Increase Circling Cat C visibility to 2 SM and Circling Cat D visibility to 2 ¾ SM. For inop ALS, increase LPV and LNAV/VNAV all Cats visibility to ¾ SM, and LNAV Cat C/D visibility to 1 ½ SM. VDP and Baro-VNAV NA when using Valdosta altimeter setting. Circling Rwy 4, 14, 32 NA at night. For inop ALS when using Valdosta altimeter setting, increase LPV all Cats visibility to 1 ½ SM, LNAV/VNAV Cat D to 1 ¼ SM and LNAV Cat C/D to 1 ¾ SM.

MALSF

MISSED APPROACH:
Climb to 700 then climbing left turn to 2000 direct GEF VORTAC and hold.

AWOS-3PT 119.175	VALDOSTA APP CON* 126.6 285.6	UNICOM 123.075 (CTAF) 0
----------------------------	---	-----------------------------------



700	2000	GEF
*LNAV only.		
*1.2 NM to RW22		
RW22		
JEXER 1600		
WEVOB 2500		
GP 3.04° TCH 60		
1.2 2.9 NM 6.4 NM		
CATEGORY	A	B C D
LPV DA		512-¾ 270 (300-¾)
LNAV/VNAV DA		530-¾ 288 (300-¾)
LNAV MDA	660-¾ 418 (400-¾)	660-1 418 (400-1)
CIRCLING	700-1 436 (500-1)	800-1 536 (600-1) 900-1¾ 636 (700-1¾) 1040-2½ 776 (800-2½)

