

LOC I-CSG 110.3	APP CRS 056°	Rwy Idg TDZE Apt Elev 6997 380 397
---------------------------	------------------------	--

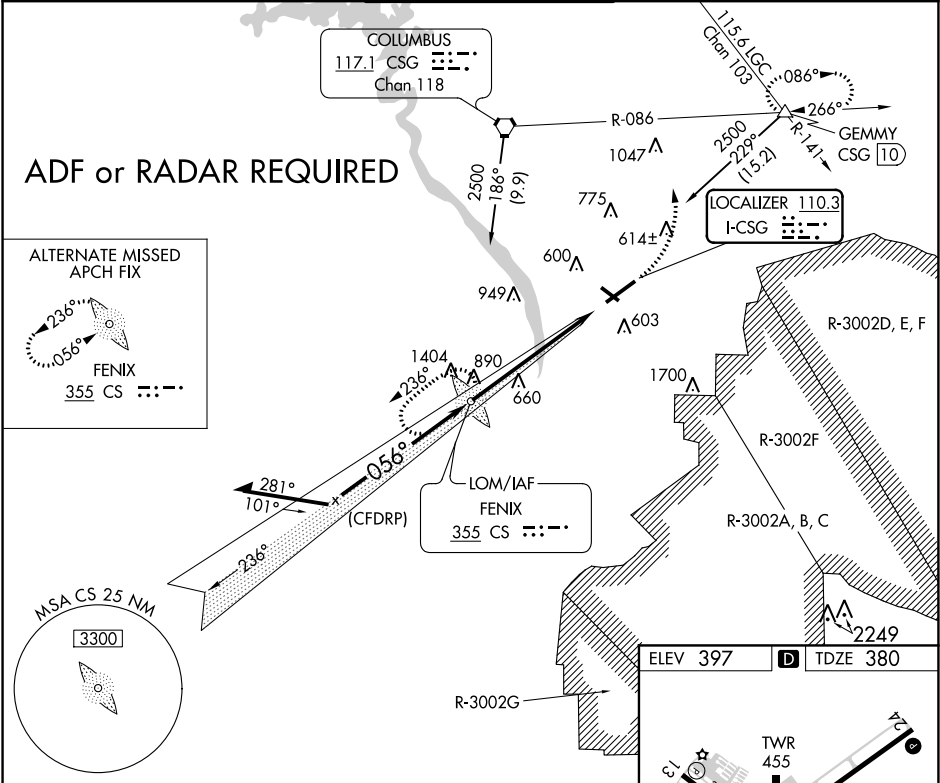
ILS or LOC RWY 6
COLUMBUS (CSG)

Night landing: Rwy 13, 31 NA.

MALSR

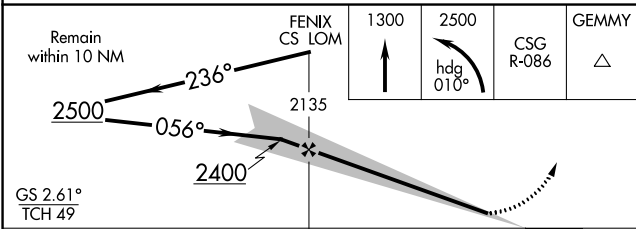
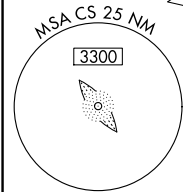
MISSED APPROACH: Climb to 1300 then climbing left turn to 2500 on heading 010° and CSG VORTAC R-086 to GEMMY INT/CSG 10 DME and hold.

ATIS 127.75	ATLANTA APP CON ★ 125.5 323.1	COLUMBUS TOWER ★ 120.1 (CTAF) 257.8	GND CON 121.9 348.6	UNICOM 122.95
-----------------------	---	---	-------------------------------	-------------------------



ALTERNATE MISSED APCH FIX

FENIX
355 CS 236° 056°



ELEV 397 **D** TDZE 380

REIL Rwy 24
HIRL Rwy 6-24
MIRL Rwy 13-31
REIL Rwys 13 and 31

FAF to MAP 6.1 NM

Knots	60	90	120	150	180
Min:Sec	6:06	4:04	3:03	2:26	2:02

SE-4, 31 DEC 2020 to 28 JAN 2021

SE-4, 31 DEC 2020 to 28 JAN 2021