

WAAS CH 82200 W18A	APP CRS 185°	Rwy Idg TDZE Apt Elev	6107 592 592
--	------------------------	-----------------------------	---

RNAV (GPS) RWY 18

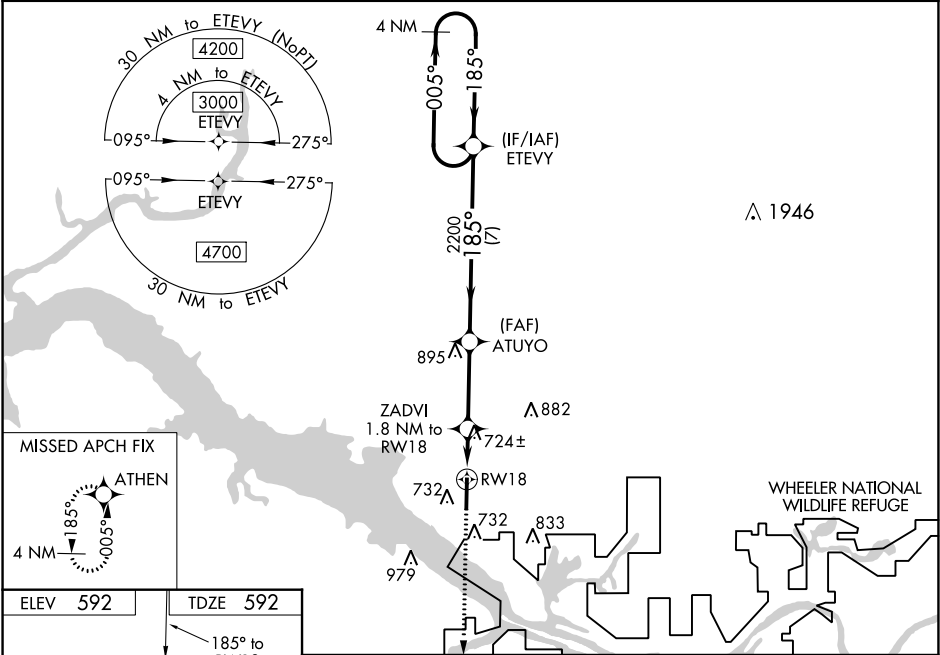
PRYOR FIELD RGNL (DCU)

⚠

DME/DME RNP-0.3 NA. When local altimeter setting not received, use Huntsville Intl-Carl T. Jones Field altimeter setting: increase LPV DA to 817 and LNAV/VNAV DA to 920 and all visibilities ½ mile. Increase all MDA 40 feet and LNAV Cat C and D visibility ½ mile. VDP and Baro-VNAV NA when using Huntsville-Carl T. Jones Field altimeter setting. For uncompensated Baro-VNAV systems, LNAV/VNAV NA below -11°C (13°F) or above 54°C (130°F).

MISSED APPROACH:
Climb to 3000 direct
ATHEN and hold.

ASOS 118.375	HUNTSVILLE APP CON* 118.05 239.0	UNICOM 123.075 (CTAF) 0
------------------------	--	-----------------------------------



ELEV 592

TDZE 592

185° to RW18

81

001 x 0019

636

36

HIRL Rwy 18-36 0

REIL Rws 18 and 36 0

3000

ATHEN

↑

⬠

*LNAV only

RW18

1.1 NM

0.7

3.1 NM

7 NM

ETE VY

4 NM Holding Pattern

ZADVI

1.8 NM to RW18

ATUYO

2200

1180

2200

005°

185°

GP 3.00°

TCH 47

CATEGORY	A	B	C	D
LPV DA	792-¾		200 (200-¾)	
LNAV/VNAV DA	895-1		303 (400-1)	
LNAV MDA	980-1	388 (400-1)	980-1½	388 (400-1½)
CIRCLING	1040-1 448 (500-1)	1060-1 468 (500-1)	1340-2¼ 748 (800-2¼)	1340-2½ 748 (800-2½)