

WAAS CH 65930 W26A	APP CRS 265°	Rwy Idg TDZE 814 Apt Elev 841	5797 814 841
--	------------------------	---	---

RNAV (GPS) RWY 26

FULTON COUNTY EXECUTIVE/CHARLIE BROWN FIELD (F'TY)

RNP APCH.		MISSED APPROACH: Climb to 4000 direct BUCAB and on track 282° to MIKEE and hold.	
⚠ Circling Rwy 14, 32 NA at night. ⚠ Rwy 26 helicopter visibility reduction below ¾ SM NA.			
ATIS 120.175	ATLANTA APP CON 121.0 268.7	FULTON COUNTY TOWER 118.45 257.8	GND CON 121.7 348.6

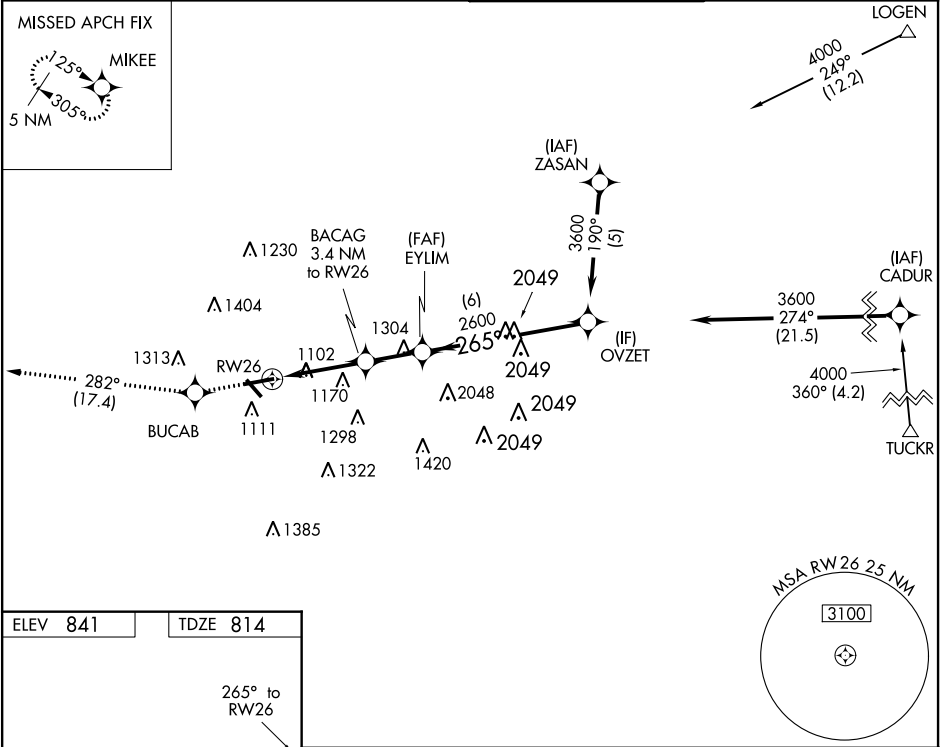


Diagram of the final approach segment showing the path from BUCAB to MIKEE, then to EY LIM, and finally to OVZET. Altitudes and distances are marked: 4000 at BUCAB, 265° to RWY 26, 1940 at EY LIM, and 3600 at OVZET. A 3.00° TCH 50 is indicated.

Diagram of the final approach segment showing the path from BUCAB to MIKEE, then to EY LIM, and finally to OVZET. Altitudes and distances are marked: 4000 at BUCAB, 265° to RWY 26, 1940 at EY LIM, and 3600 at OVZET. A 3.00° TCH 50 is indicated.

HIRL Rwy 8-26
MIRL Rwy 14-32
REIL Rws 14, 26 and 32

CATEGORY	A	B	C	D
LP MDA	1360-1 546 (600-1)		1360-1½ 546 (600-1½)	
LNAV MDA	1480-1 666 (700-1)		1480-1½ 666 (700-1½)	
C CIRCLING	1480-1 639 (700-1)	1520-1 679 (700-1)	1740-2¾ 899 (900-2¾)	1740-3 899 (900-3)