

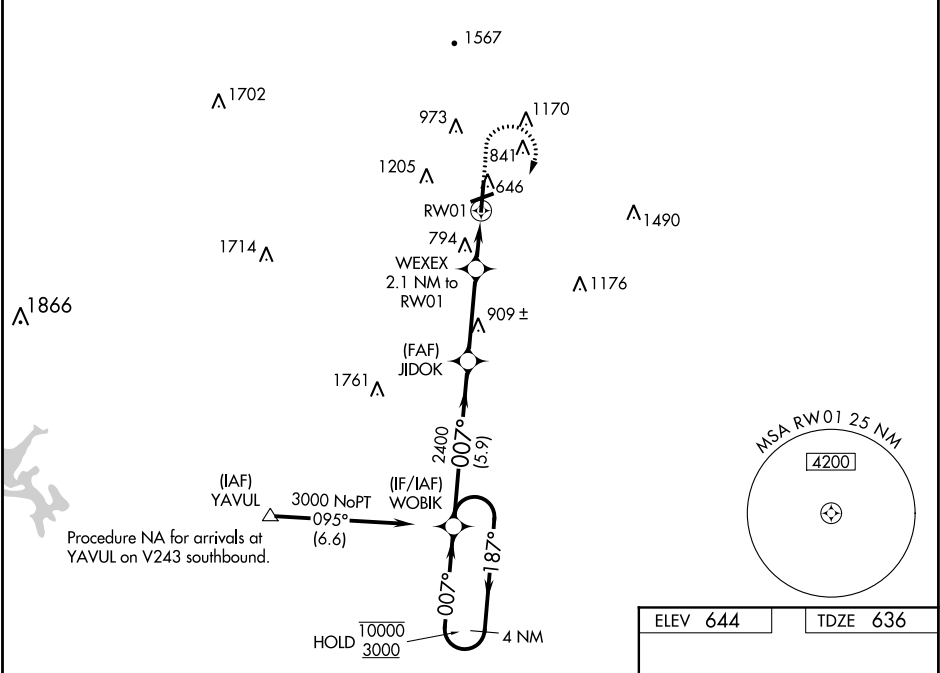
WAAS CH <b>78441</b> <b>W01A</b>	APP CRS <b>007°</b>	Rwy Idg TDZE <b>6006</b> <b>636</b> Apt Elev <b>644</b>
--	------------------------	--

RNAV (GPS) RWY 1

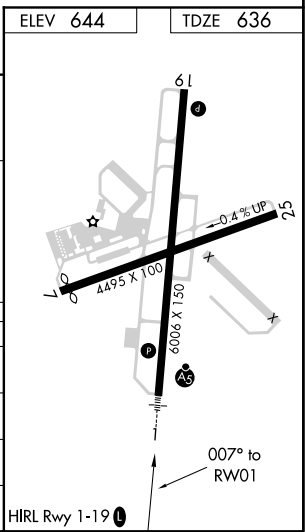
RICHARD B RUSSELL RGNL - J H TOWERS FIELD (RMG)

RNP APCH. ▼ Rwy 1 helicopter visibility reduction below ¾ SM NA. For uncompensated Baro-VNAV systems, LNAV/VNAV NA below -10°C or above 54°C. Circling NA west of Rwy 1-19 at night. Circling NA northwest of Rwy 7 and 19. For inop ALS, increase LPV all Cats visibility to ¾ SM, LNAV/VNAV all Cats visibility to 1 SM, LNAV Cats A/B visibility to 1 SM, and LNAV Cats C/D visibility to 1 ¾ SM.	MALSRL ALS	MISSED APPROACH: Climb to 1200 then climbing right turn to 3000 direct WOBIK and hold.
---	---------------	---

ASOS <b>119.925</b>	ATLANTA CENTER <b>124.5 270.325</b>	GCO <b>121.725</b>	UNICOM <b>123.0 (CTAF) 1</b>
------------------------	--	-----------------------	---------------------------------



4 NM Holding Pattern	WOBIK	JIDOK	WEXEX	RW01
10000 3000	2400	2.1 NM to RW01	1.3 NM to RW01	
GP 3.00 TCH 49	*1340			
	5.9 NM	3.3 NM	0.8 NM	1.3 NM
CATEGORY	A	B	C	D
LPV DA		937-¾	301 (300-¾)	
LNAV/VNAV DA		994-¾	358 (400-¾)	
LNAV MDA	1100-¾	464 (500-¾)	1100-1	464 (500-1)
CIRCLING	1140-1 496 (500-1)	1200-1 556 (600-1)	1480-2½ 836 (900-2½)	1860-3 1216 (1300-3)



SE-4, 31 DEC 2020 to 28 JAN 2021

SE-4, 31 DEC 2020 to 28 JAN 2021