

WAAS
CH **48811**
W19A

APP CRS
187°

Rwy Idg
TDZE **635**
Apt Elev **644**

RNAV (GPS) RWY 19

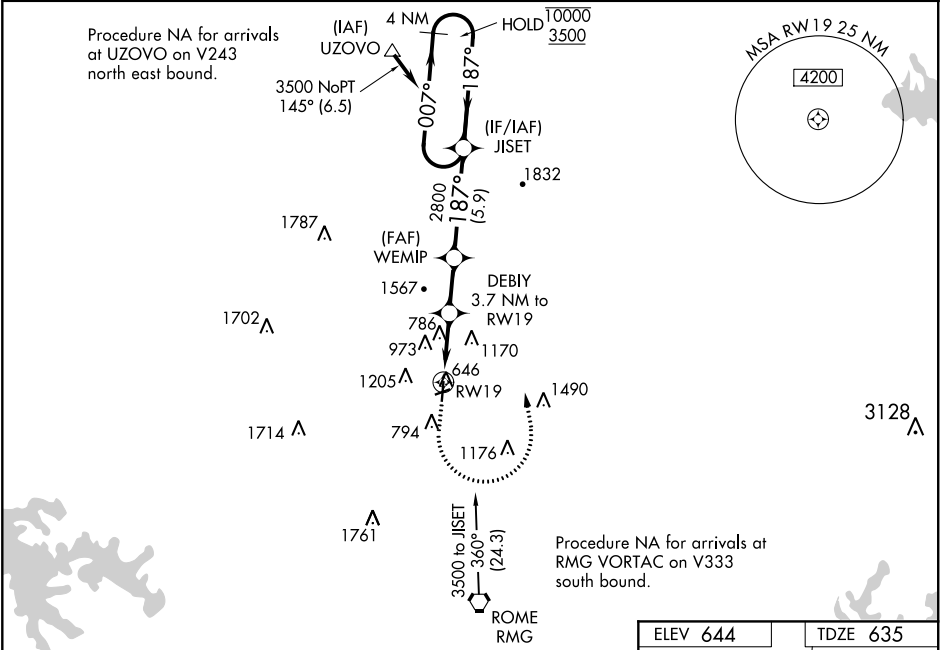
RICHARD B RUSSELL RGNL - J H TOWERS FIELD (RMG)

RNP APCH.

Rwy 19 helicopter visibility reduction below ¾ SM NA. For uncompensated Baro-VNAV systems, LNAV/VNAV NA below -10°C or above 54°C. Circling NA west of Rwy 1-19 at night. Circling NA northwest of Rwy 7 and 19.

MISSED APPROACH: Climb to 2000 then climbing left turn to 3500 direct JISET and hold.

ASOS 119.925	ATLANTA CENTER 124.5 270.325	GCO 121.725	UNICOM 123.0 (CTAF) 0
------------------------	--	-----------------------	---------------------------------



4 NM Holding Pattern

2000 3500 JISET

10000 3500 007° 187°

GP 3.00° TCH 45

2800 187°

WEMIP 2800

DEBIY 3.7 NM to RW19

RW19

* LNAV only

* 1.2 NM to RW19

5.9 NM 3 NM 2.5 NM 1.2

ELEV 644 TDZE 635

187° to RW19

61 6000 4495 X 100 150 0.4% UP

HIRL Rwy 1-19 0

CATEGORY	A	B	C	D
LPV DA		1004-1	369 (400-1)	
LNAV/VNAV DA		1015-1	380 (400-1)	
LNAV MDA	1040-1	405 (400-1)	1040-1½	405 (400-1½)
CIRCLING	1140-1 496 (500-1)	1200-1 556 (600-1)	1480-2½ 836 (900-2½)	1860-3 1216 (1300-3)