

LOC I-VLD	APP CRS	Rwy Idg	8002
110.9	356°	TDZE	200
		Apt Elev	203

ILS or LOC RWY 35

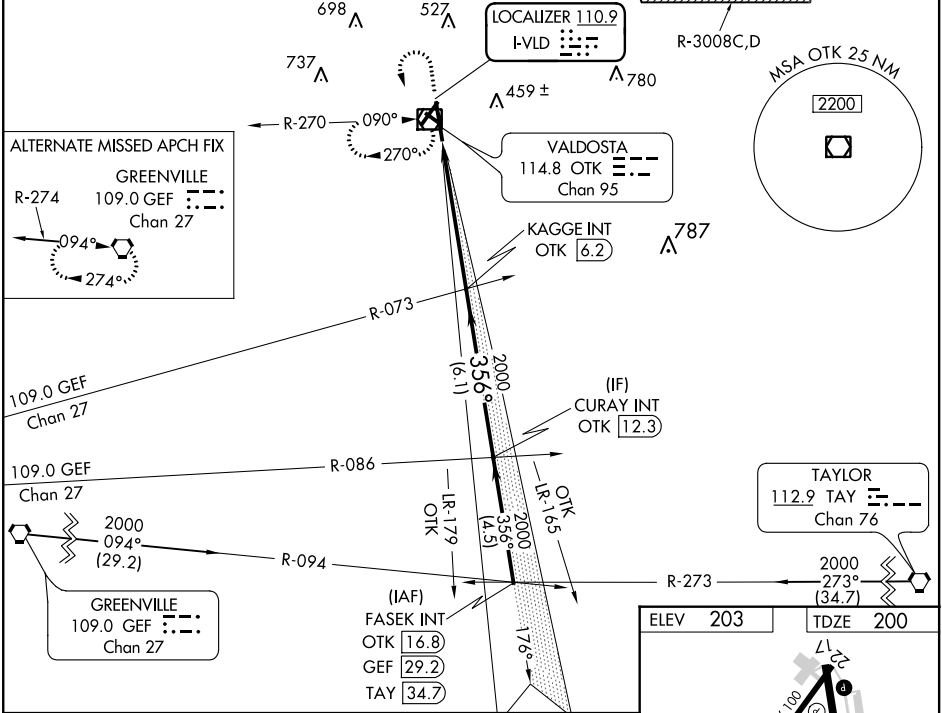
VALDOSTA RGNL (VLD)

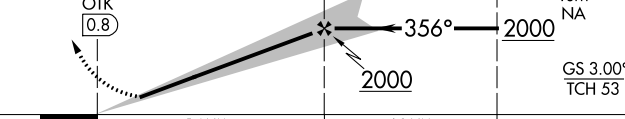
For inoperative MALS, increase S-ILS 35 all Cats visibility to 1 mile and S-LOC 35 Cats A, B visibility to 1 mile, Cat E visibility to 1½ mile. Visibility reduction by helicopters NA. When local altimeter setting not received, use Moultrie altimeter setting and increase all DA 88 feet and all MDA 100 feet and increase S-LOC 35 Cats C and D visibility ¼ mile and Cat E visibility ½ mile. DME from OTK VOR/DME. For inoperative MALS, when using Moultrie altimeter setting, increase S-ILS 35 Cat E visibility to 1¼ mile and increase S-LOC 35 Cats A and B visibility to 1 mile, Cat E to 2 miles. Circling to Rwy 4, 13, and 31 NA at night.

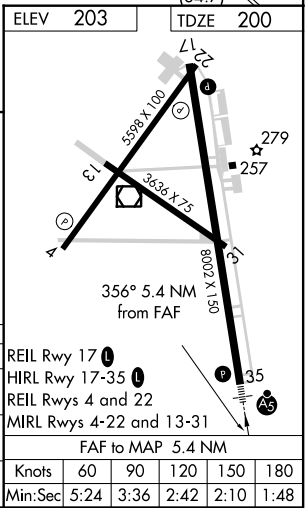
MALS

MISSED APPROACH: Climb to 1200 then climbing left turn to 2000 direct OTK VOR/DME and hold, continue climb-in-hold to 2000.

ASOS	VALDOSTA APP CON *	VALDOSTA TOWER *	GND CON	UNICOM
126.225	126.6 285.6	120.9 (CTAF) 0	121.7	122.95



1200	2000	OTK			
↑	↷	☐			
					
CATEGORY	A	B	C	D	E
S-ILS 35	489- ³ / ₄ 289 (300- ³ / ₄)				
S-LOC 35	660- ³ / ₄ 460 (500- ³ / ₄)			660-1 460 (500-1)	
CIRCLING	660-1 457 (500-1)		660-1½ 457 (500-1½)	780-2 577 (600-2)	1040-3 837 (900-3)



SE-4, 31 DEC 2020 to 28 JAN 2021

SE-4, 31 DEC 2020 to 28 JAN 2021