

WAAS CH 86206 W35A	APP CRS 356°	Rwy Idg TDZE Apt Elev	8002 200 203
----------------------------------------	------------------------	-----------------------------	-----------------------------------------

RNAV (GPS) RWY 35

VALDOSTA RGNL (VLD)

Baro-VNAV NA when using Moultrie altimeter setting. For uncompensated Baro-VNAV systems, LNAV/VNAV NA below -15°C (5°F) or above 48°C (118°F). DME/DME RNP-0.3 NA.

Visibility reduction by helicopters NA. When local altimeter setting not received, use Moultrie altimeter setting and increase all DA 88 feet and all MDA 100 feet and increase LNAV/VNAV all Cats and Circling Cat D visibility ¼ mile. For inoperative MALSR, increase LPV all Cats visibility to 1 mile, increase LNAV Cats A, B, and C visibility to 1 mile, and increase LNAV Cat D visibility to 1 ¼ mile. For inoperative MALSR when using Moultrie altimeter setting, increase LNAV Cats A and B visibility to 1 mile. VDP NA when using Moultrie altimeter setting. Circling to Rwy 4, 13, and 31 NA at night.

MALSR

MISSED APPROACH: Climb to 2200 direct CUVGA and left turn on track 266° to HIVNI and left turn on track 176° to DEWYY left turn on track 086° to OTK VOR/DME and hold.

ASOS 126.225	VALDOSTA APP CON * 126.6 285.6	VALDOSTA TOWER * 120.9 (CTAF) 0	GND CON 121.7	UNICOM 122.95
------------------------	------------------------------------------	-------------------------------------------	-------------------------	-------------------------

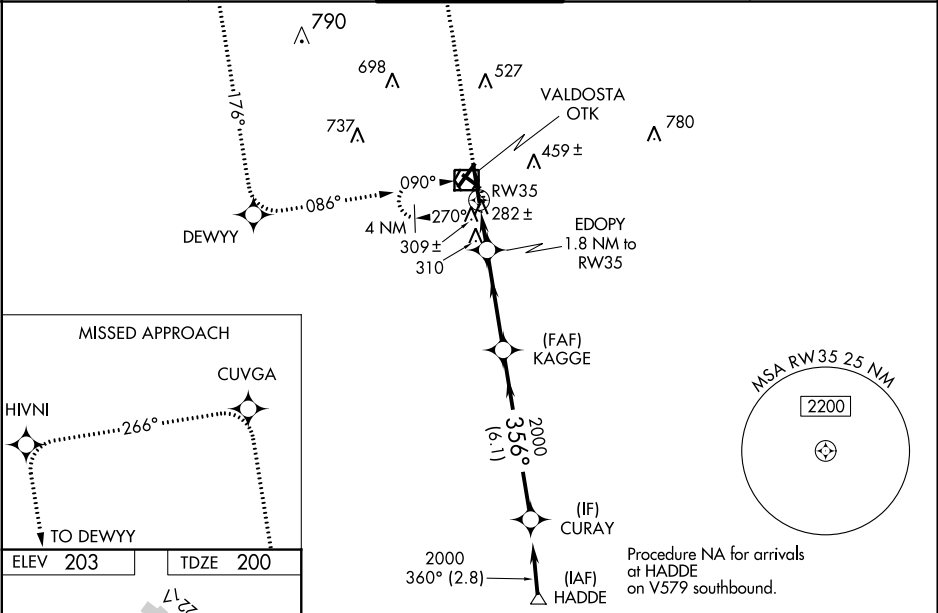


Diagram illustrating the approach procedure for RWY 35, showing various waypoints (A through Z), distances (e.g., 5598 X 100, 3636 X 75, 8002 X 150), and altitudes (e.g., 279, 257, 356° to RW35, 35, 17-35, 4-22, 13-31). The diagram also shows the REIL Rwy 17-35 and REIL Rwy 4-22 and 13-31.

2200	CUVGA	HIVNI	DEWYY	OTK	Procedure Turn NA
↑	☼	tr 266°	tr 176°	tr 086°	
*LNAV only.					
EDOPY 1.8 NM to RW35		KAGGE 2000		CURAY 2000	
*1 NM to RW35		*820		GP 3.00° TCH 53	
1 NM		0.8 NM		3.6 NM	
				6.1 NM	
CATEGORY	A		B	C	D
LPV DA	489-¾ 289 (300-¾)				
LNAV/ VNAV DA	609-1 409 (500-1)				
LNAV MDA	560-¾ 360 (400-¾)				560-1 360 (400-1)
CIRCLING	640-1 437 (500-1)	660-1 457 (500-1)	660-1½ 457 (500-1½)	780-2 577 (600-2)	

SE-4, 31 DEC 2020 to 28 JAN 2021

SE-4, 31 DEC 2020 to 28 JAN 2021