

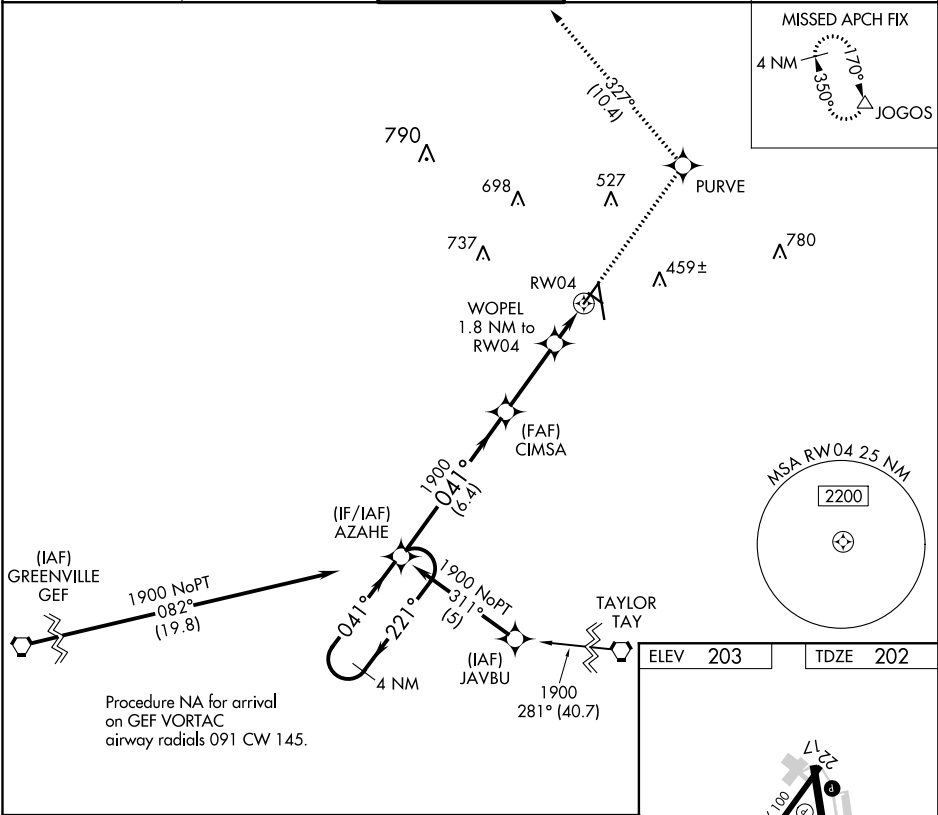
| | | |
|---------|----------|------|
| APP CRS | Rwy Idg | 5598 |
| 041° | TDZE | 202 |
| | Apt Elev | 203 |

RNAV (GPS) RWY 4
VALDOSTA RGNL (VLD)

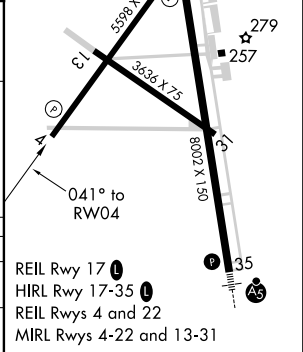
⚠ Rwy 4 helicopter visibility reduction below 1 SM NA. DME/DME RNP-0.3 NA. When local altimeter setting not received, use Moultrie altimeter setting and increase all MDA 100 feet and LNAV Cat C and D visibility ½ SM, Circling Cat D ¼ SM. Straight-in Rwy 4 NA at night, Circling Rwy 4, 13, 31 NA at night.

MISSED APPROACH: Climb to 3000 direct PURVE and on track 327° to JOGOS and hold.

| | | | | |
|-----------------|-----------------------------------|------------------------------------|------------------|------------------|
| ASOS 126.225 | VALDOSTA APP CON ★ 126.6 285.6 | VALDOSTA TOWER ★ 120.9 (CTAF) 0 | GND CON 121.7 | UNICOM 122.95 |
|-----------------|-----------------------------------|------------------------------------|------------------|------------------|



| Visual Segment - Obstacles. | | | | |
|--|----------------------|----------------------|------------------------|----------------------|
| <div>4 NM Holding Pattern</div> <div>1900 ← 221° / 041° → 1900</div> <div>6.4 NM 3 NM 1.8 NM</div> | | | | |
| <div>Visual Segment - Obstacles.</div> <div>3000 PURVE tr 327° JOGOS</div> | | | | |
| <div>Visual Segment - Obstacles.</div> <div>3000 PURVE tr 327° JOGOS</div> | | | | |
| CATEGORY | A | B | C | D |
| LNAV MDA | 560-1 358 (400-1) | | | |
| CIRCLING | 640-1 437 (500-1) | 660-1 457 (500-1) | 660-1½ 457 (500-1½) | 780-2 577 (600-2) |



SE-4, 31 DEC 2020 to 28 JAN 2021

SE-4, 31 DEC 2020 to 28 JAN 2021