

VOR/DME OTK	APP CRS	Rwy Idg	8002
114.8	338°	TDZE	200
Chan 95		Apt Elev	203

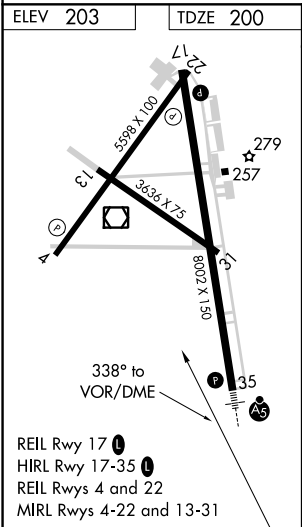
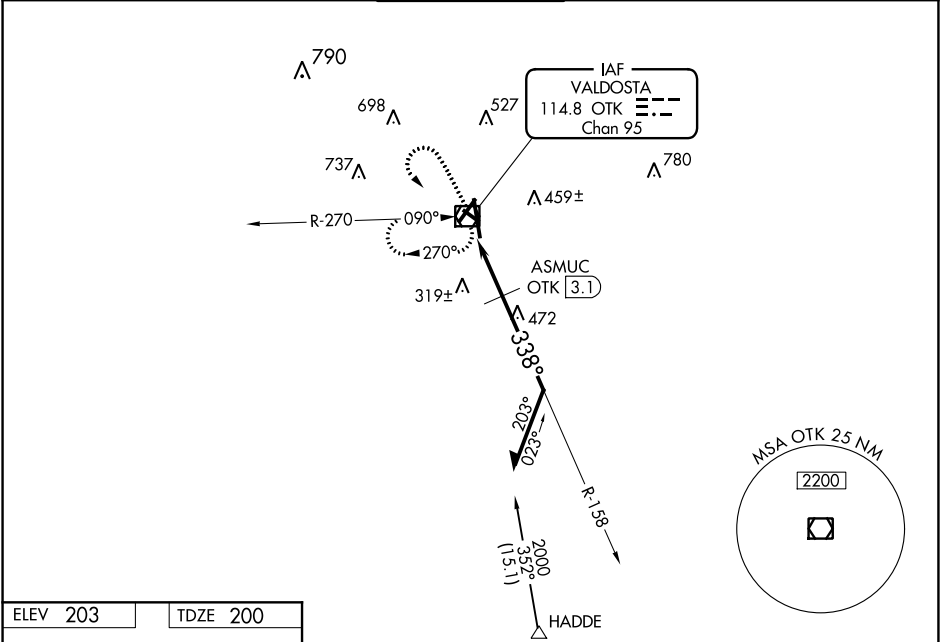
VOR RWY 35
VALDOSTA RGNL (VLD)

For inop ALS, increase S-35 Cats A/B visibility to 1 SM. ASMUC FIX MINIMUMS: Increase S-35 Cats A/B/C visibility to 1 SM and Cat D to 1¼ SM. Rwy 35 helicopter visibility reduction below ¾ SM NA. VDP NA with Moultrie altimeter setting. When local altimeter setting not received, use Moultrie altimeter setting and increase all MDAs 100 feet and increase all Cat C/D visibilities ½ SM. Circling Rwy 4, 13, 31 NA at night.

MALS

MISSED APPROACH: Climb to 1200 then climbing left turn to 2000 direct OTK VOR/DME and hold, continue climb-in-hold to 2000.

ASOS	VALDOSTA APP CON *	VALDOSTA TOWER *	GND CON	UNICOM
126.225	126.6 285.6	120.9 (CTAF) 0	121.7	122.95



1200	2000	OTK	OTK VOR/DME	158°	1800	338°	*780	Remain within 10 NM
*880 when using Moultrie altimeter setting.								
ASMUC OTK 3.1								
OTK 1.9								
0.8 1 NM 1.3 NM								
CATEGORY	A	B	C	D				
S-35	780-¾	580 (600-¾)	780-1	780-1¼	580 (600-1) 580 (600-1¼)			
CIRCLING	780-1	577 (600-1)	780-1½	780-2	577 (600-1½) 577 (600-2)			
ASMUC FIX MINIMUMS								
S-35	580-¾ 380 (400-¾)				580-1 380 (400-1)			
CIRCLING	640-1	660-1	660-1½	780-2	437 (500-1) 457 (500-1) 457 (500-1½) 577 (600-2)			

SE-4, 31 DEC 2020 to 28 JAN 2021

SE-4, 31 DEC 2020 to 28 JAN 2021