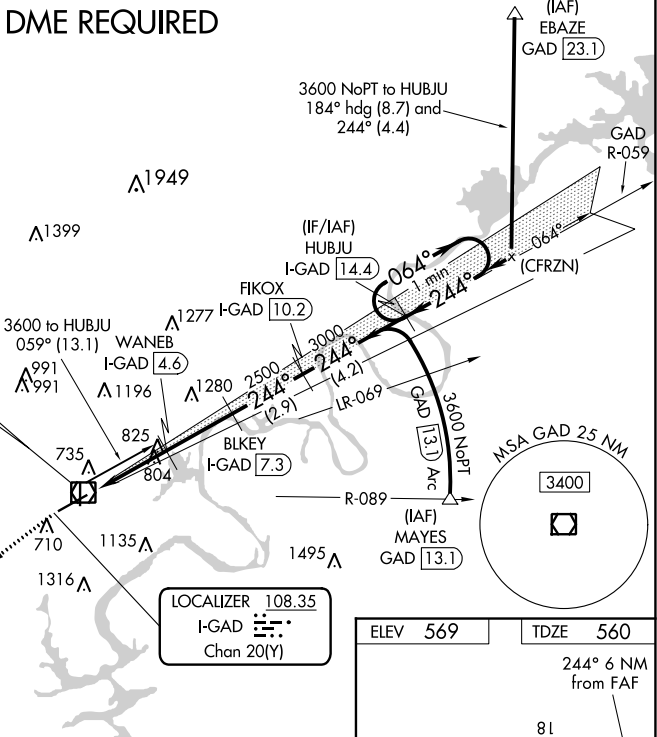


ILS or LOC RWY 24  
NORTHEAST ALABAMA RGNL (GAD)

**MISSED APPROACH:** Climb to 3600 on GAD VOR/DME R-231 to STAMP/GAD 10 DME and hold, continue climb-in-hold to 3600.


AWOS-3PT <b>127.825</b>	BIRMINGHAM APP CON <b>125.45 279.65</b>	CLNC DEL <b>120.05 257.7</b>	UNICOM <b>122.8 (CTAF) 0</b>
----------------------------	--	---------------------------------	---------------------------------

## DME REQUIRED



SE-4, 31 DEC 2020 to 28 JAN 2021

SE-4. 31 DEC 2020 to 28 JAN 2021

3600 ↑	GAD R-231	STAMP △	Use I-GAD DME when on the localizer course.		HUBJU I-GAD 14.4
			BIKEY I-GAD 7.3	FIKOX I-GAD 10.2	
*LOC only.			WANEB I-GAD 4.6	2500	One Minute Holding Pattern
			I-GAD 3	244°	064° → 3600
			I-GAD 1.3	3000	← 244°
			1620*	2500	GS 3.00° TCH 43
			1.7 NM	1.6 NM	2.7 NM
			2.9 NM	4.2 NM	
CATEGORY	A		B		C
S-ILS 24			779-3 <sup>3</sup> / <sub>4</sub>		219 (300-3 <sup>3</sup> / <sub>4</sub> )
S-LOC 24	1140-1		580 (600-1)		1140-1 <sup>3</sup> / <sub>4</sub> 580 (600-1 <sup>3</sup> / <sub>4</sub> )
 CIRCLING	1140-1		571 (600-1)		1440-2 <sup>1</sup> / <sub>2</sub> 871 (900-2 <sup>1</sup> / <sub>2</sub> )
					1680-3 1111 (1200-3)

ELEV 569

TDZE 560

244° 6 NM from FAF

81

6802 X 150

4806 X 100

0.3% UP

36

603

HIRL Rwy 6-24

MIRL Rwy 18-36

REIL Rwy 6-24