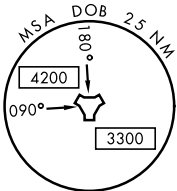
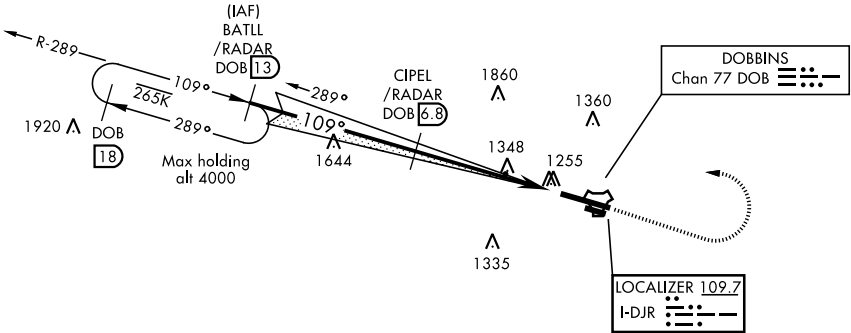


ILS or LOC RWY 11

LOC I-DJR <b>109.7</b>	APCH CRS <b>109°</b>	Rwy ldg <b>10,002</b> TDZE <b>1069</b> Arprt Elev <b>1069</b>	AL-959 [USAF]	DOBBINS ARB (KMGE)
DME required. * When ALS inop, increase RVR to 55 and vis to 1 mile. ** When ALS inop, increase CAT AB RVR to 55 and vis to 1 mile, CAT CDE vis to 1½ miles.			ALSf-1 	† MISSED APPROACH: Climb to 2000 track 109°, then climbing left turn to 3000, intercept the DOB TACAN R-289 to BATLL and hold.
ATIS ★ <b>269.5</b>	ATLANTA APP CON <b>121.0 268.7</b>	DOBBINS TOWER ★ <b>120.75 370.875</b>	GND CON <b>125.3 275.8</b>	ASR

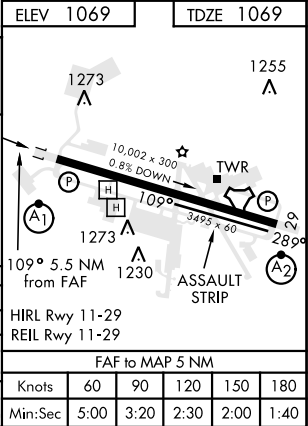
\*\*\* Circling not authorized N of Rwy 11-29 for CAT DE aircraft,  
Circling to assault strip not authorized.

† Missed approach requires use of RNAV  
or ATC RADAR monitoring.



EMERG SAFE ALT 100 NM 7700

BATLL DOB R-289 /RADAR 13		CIPEL /RADAR 6.8	†LOC only	2000 tr 109°	3000	BATLL DOB 13
3000 109°		2883		2900		
GS 3.00° TCH 57						
				5 NM	5 NM	
CATEGORY	A	B	C	D	E	
S-ILS 11*	1401/40		332	(400-¾)		
S-LOC 11**	1600/40 531 (600-¾)		1600/55 531	(600-1)		
*** CIRCLING	1660-1 591 (600-1)		1700-1¾ 631 (700-1¾)	1700-2 631 (700-2)	1700-2¼ 631 (700-2¼)	



ILS or LOC RWY 11

SE-4, 31 DEC 2020 to 28 JAN 2021

SE-4, 31 DEC 2020 to 28 JAN 2021