
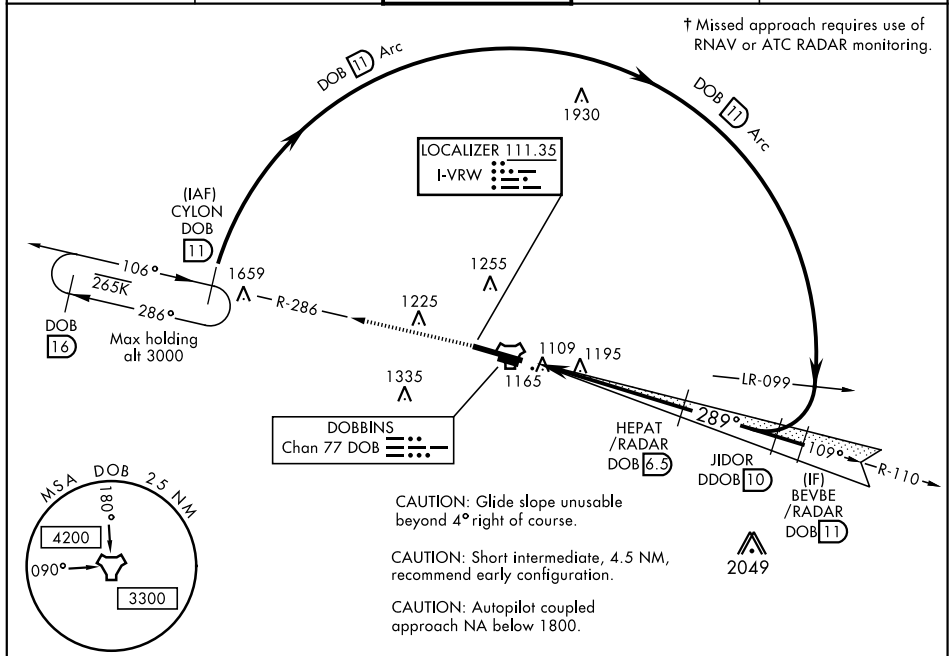


ILS or LOC RWY 29

LOC I-RVW 111.35	APCH CRS 289°	Rwy Ldg 10,002 TDZE 1014 Arpt Elev 1069	AL-959 [USAF]	DOBBINS ARB (KMGE)	
DME required. ▼ * When ALS inop, increase CAT AB RVR to 55 and vis to 1 mile, CAT CDE vis to 1½ miles. ** Circling not authorized N of Rwy 11-29 for CAT DE aircraft. Circling to assault strip not authorized.			SALS 	† MISSED APPROACH: Climb to 3000 via DOB TACAN R-286 to CYLON and hold.	
ATIS ★ 269.5	ATLANTA APP CON 121.0 268.7	DOBBINS TOWER ★ 120.75 370.875	GND CON 125.3 275.8	ASR	



EMERG SAFE ALT 100 NM 7700

