

MARIETTA, GEORGIA

RNAV (GPS) RWY 11


APCH CRS	Rwy Idg	10,002
109°	TDZE	1069
	Arpt Elev	1069

AL-959 (USAF)

DOBBINS ARB (KMGE)

⚠ * When ALS inop, increase CAT AB RVR to 55 and vis to 1 mile, CAT CDE vis to 1 1/2 miles.
** Circling NA N of Rwy 11-29 for CAT DE aircraft. Circling to assault strip not authorized.

ALSIF-1

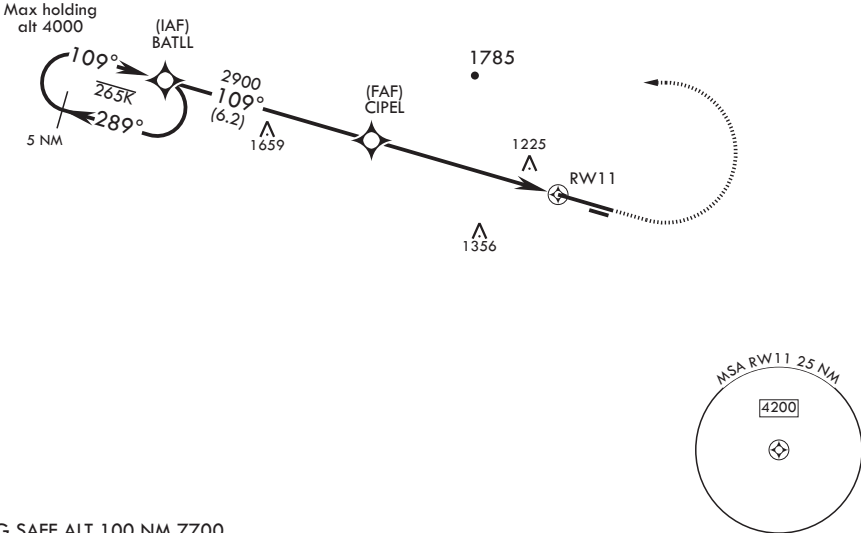


† MISSED APPROACH: Climb to 2000 then climbing left turn to 3000 direct BATLL and hold.

ATIS 269.5	ATLANTA APP CON/DEP CON 121.0 268.7	TOWER 120.75 370.875	GND CON 125.3 275.8	ASR
---------------	--	-------------------------	------------------------	-----

RNP APCH
DME/DME RNP-0.3 NA

† Missed approach requires use of
RNAV or ATC RADAR monitoring.



EMERG SAFE ALT 100 NM 7700

3000

← 289°

109° →

3.00° ≥

TCH 55

BATLL

CIPEL

2900

1.5 NM to RW11

5.6 NM

RW11

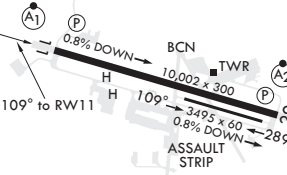
2000

3000

BATLL

ELEV 1069

TDZE 1069



CATEGORY	A	B	C	D	E
LNAV MDA*	1600/40 531 (600-3/4)		1600/55 531 (600-1)		
C CIRCLING**	1660-1 591 (600-1)		1700-1 3/4 631 (700-1 3/4)	1700-2 631 (700-2)	1700-2 1/4 631 (700-2 1/4)

HIRL all Rwys
REIL Rws 11, 29

MARIETTA, GEORGIA

33°55'N - 84°31'W

DOBBINS ARB (KMGE)

Amdt 1 05NOV20

RNAV (GPS) RWY 11

SE-4, 31 DEC 2020 to 28 JAN 2021

SE-4, 31 DEC 2020 to 28 JAN 2021