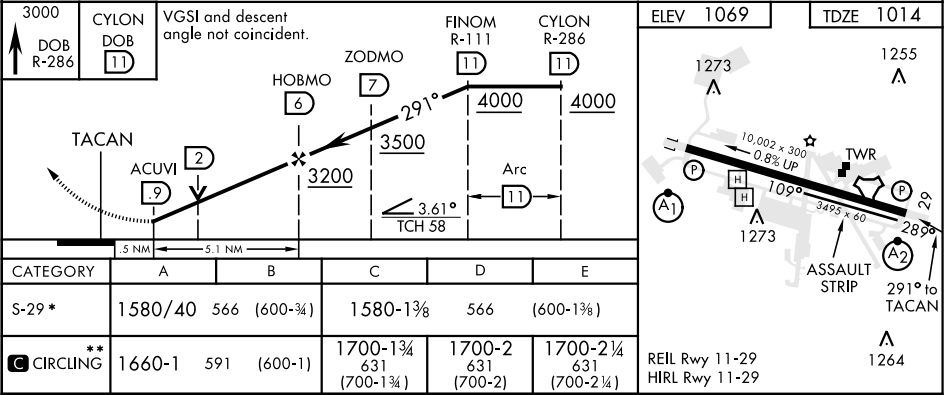
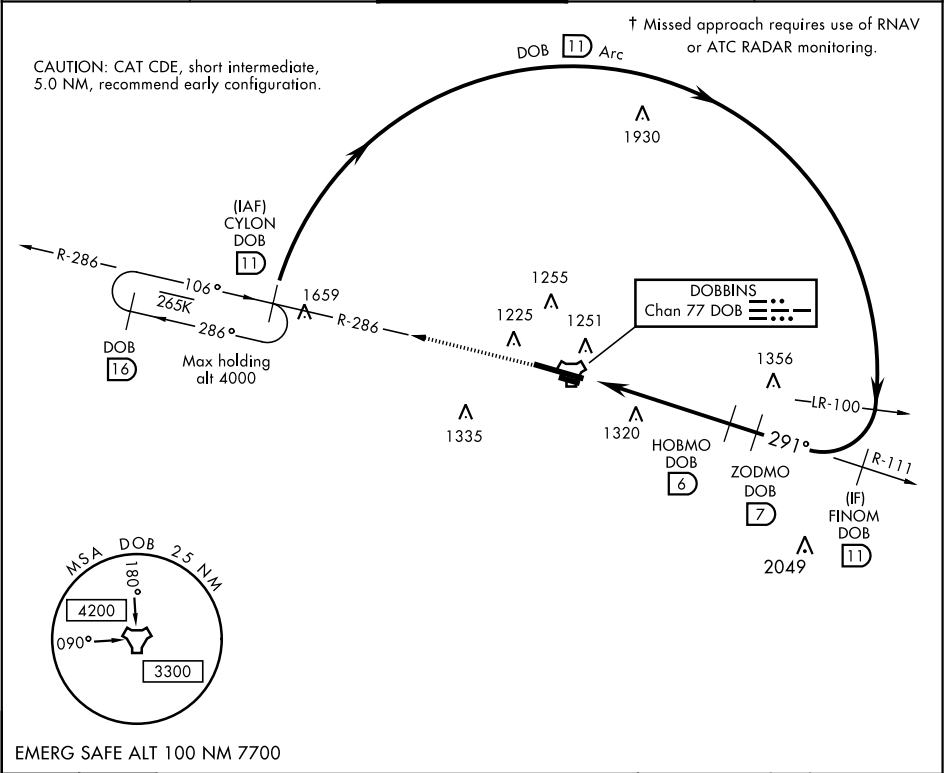


TACAN RWY 29

TACAN Chan 77	APCH CRS 291°	Rwy ldg TDZE 1014 Arprt Elev 1069	AL-959 [USAF]	DOBBINS ARB (KMGE)
* When ALS inop, increase CAT AB RVR to 55 and vis to 1 mile, CAT CDE vis to 1¾ miles. ** Circling not authorized N of Rwy 11-29 for CAT DE aircraft. Circling to assault strip not authorized.				SALS A2
† MISSED APPROACH: Climb to 3000 via DOB TACAN R-286 to CYLON and hold.				

ATIS ★ 269.5	ATLANTA APP CON 121.0 268.7	DOBBINS TOWER ★ 120.75 370.875	GND CON 125.3 275.8	ASR
-----------------	--------------------------------	-----------------------------------	------------------------	-----



TACAN RWY 29

SE-4, 31 DEC 2020 to 28 JAN 2021

SE-4, 31 DEC 2020 to 28 JAN 2021