

LOC I-AHN	APP CRS	Rwy Idg	6122
110.95	274°	TDZE	813
		Apt Elev	813

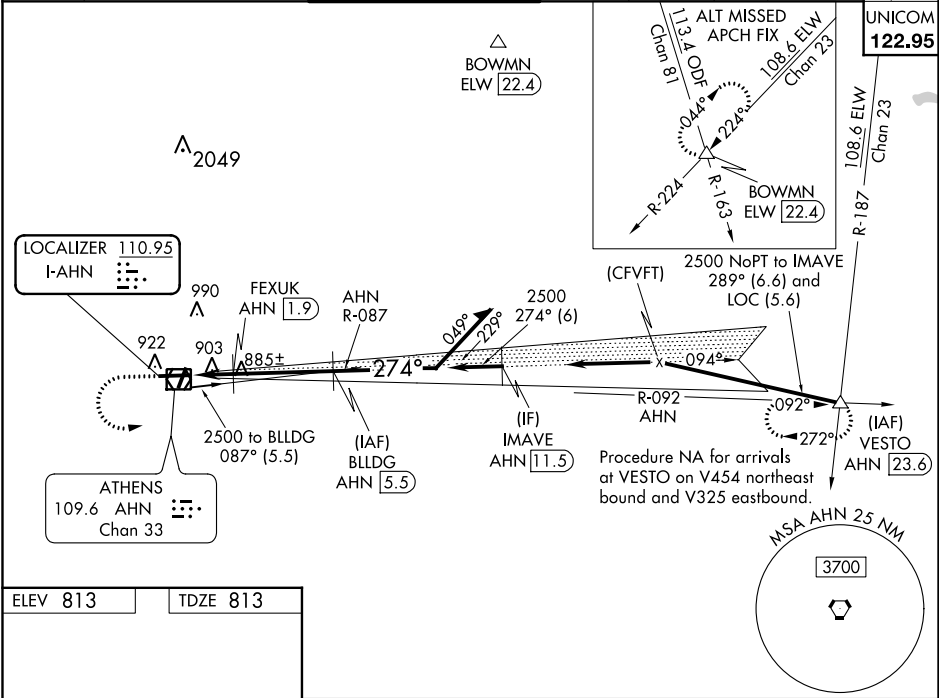
ILS or LOC/DME RWY 27
ATHENS/BEN EPPS (AHN)

⚠ Night landing: Rwy 2, 20 NA. DME from AHN VOR/DME. Simultaneous reception of I-AHN and AHN DME Required. VDP NA with Winder altimeter setting. When local altimeter setting not received, use Winder altimeter setting: increase DA to 1071 feet; increase all MDA 60 feet and S-LOC 27 visibility Cats C and D to 1 SM and Circling Cat D visibility to 2 1/4 SM. For inop MALSf, increase S-LOC 27 all Cats visibility to 1 mile. For inop MALSf when using Winder altimeter setting, increase S-ILS 27 all Cats visibility to 1/2 mile and increase S-LOC 27 Cats A and B visibility to 1 mile, and Cats C and D to 1 1/2 mile. Inop table does not apply to S-ILS 27.

MALSf

MISSED APPROACH:
Climb to 1500 then climbing left turn to 2500 on heading 060° and AHN VOR/DME R-092 to VESTO INT/ AHN 23.6 DME and hold.

ASOS	ATLANTA APP CON *	ATHENS TOWER *	GND CON	CLNC DEL	CLNC DEL
132.875	132.475 291.1 316.05	126.3 (CTAF) 338.275	121.8	121.8	132.475 291.1 316.05 (when twr closed)



ELEV 813	TDZE 813				
MIRL Rwy 2-20 MIRL Rwy 9-27					
FAF to MAP 5.2 NM					
Knots	60	90	120	150	180
Min:Sec	5:12	3:28	2:36	2:05	1:44
ATHENS, GEORGIA Amdt 2C 11OCT18					
		33°57'N-83°20'W			
		ATHENS/BEN EPPS (AHN)			
		ILS or LOC/DME RWY 27			