

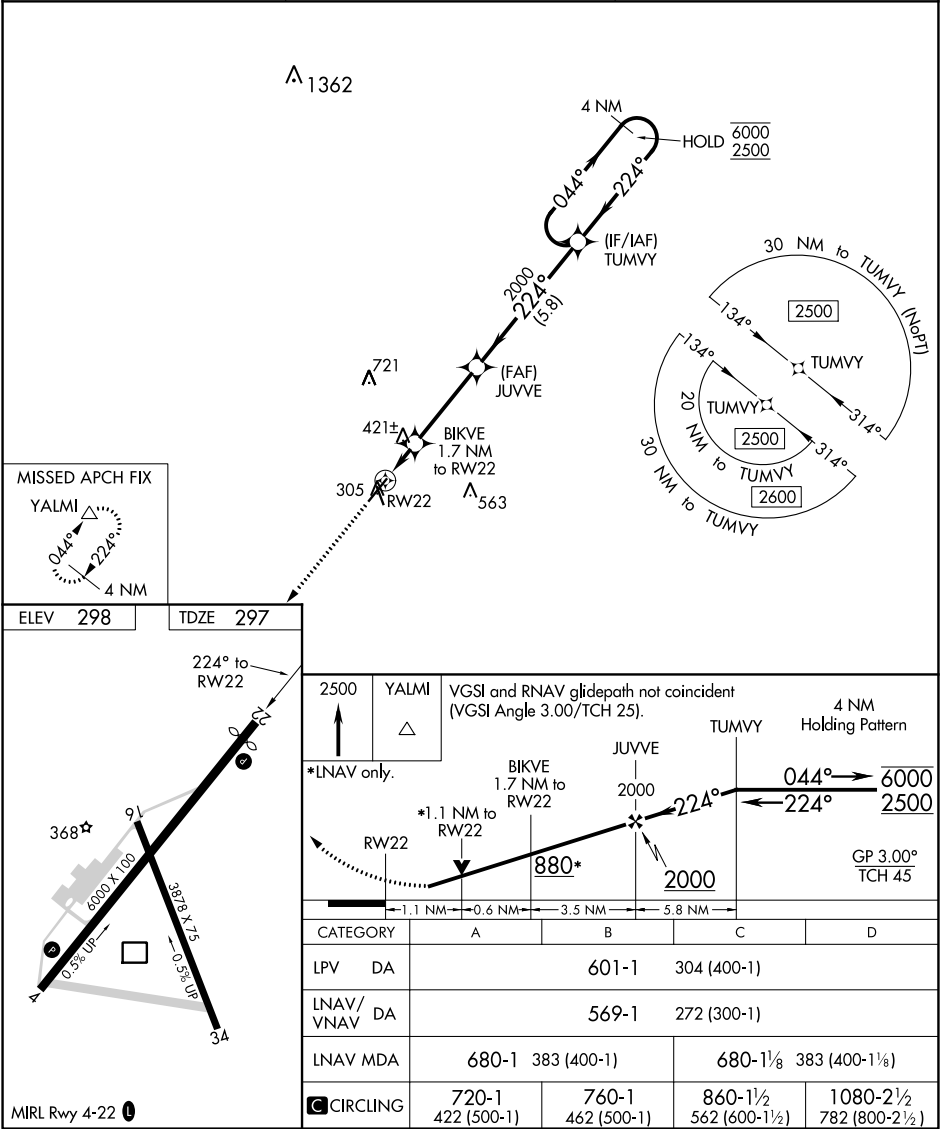
WAAS CH 93803 W22A	APP CRS 224°	Rwy Idg TDZE Apt Elev	5628 297 298
--	------------------------	-----------------------------	---

RNAV (GPS) RWY 22

MOULTRIE MUNI (MGR)

RNP APCH.	MISSED APPROACH: Climb to 2500 direct YALMI and hold.
<div><div>▼</div><div>Circling Rwy 16 NA at night.</div><div>▲</div><div>Rwy 22 helicopter visibility reduction below $\frac{3}{4}$ SM NA. For uncompensated Baro-VNAV systems, LNAV/VNAV NA below -15°C or above 54°C.</div></div>	

AWOS-3PT 118.925	VALDOSTA APP CON ★ 126.6 285.6	UNICOM 122.8 (CTAF) 0
----------------------------	--	--



MIRL Rwy 4-22 0

SE-4, 31 DEC 2020 to 28 JAN 2021

SE-4, 31 DEC 2020 to 28 JAN 2021