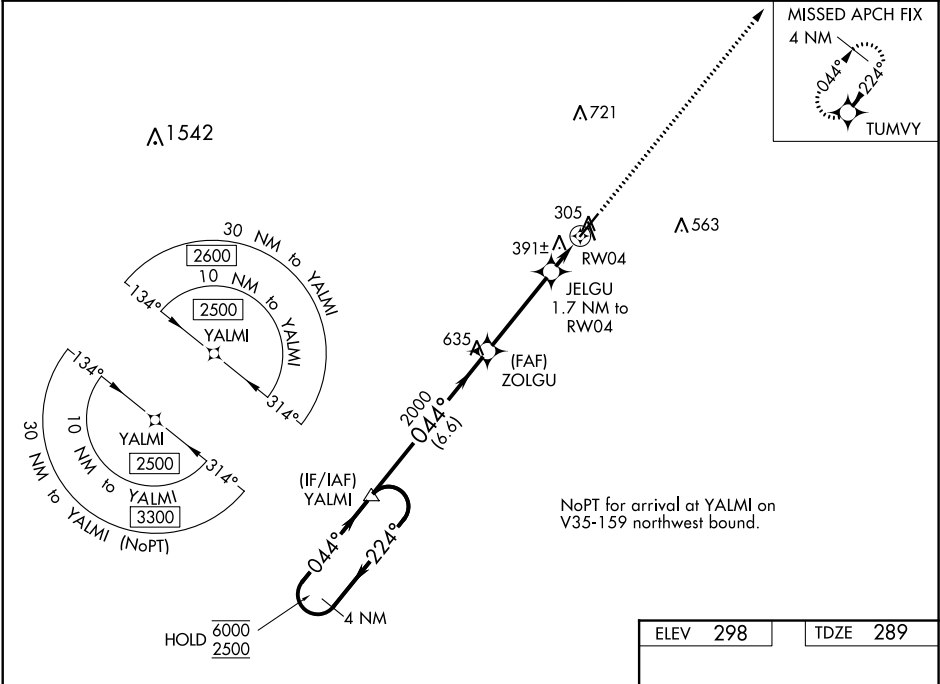


WAAS CH <b>82603</b> <b>W04A</b>	APP CRS <b>044°</b>	Rwy Idg TDZE Apt Elev	<b>6000</b> <b>289</b> <b>298</b>
--	------------------------	-----------------------------	---

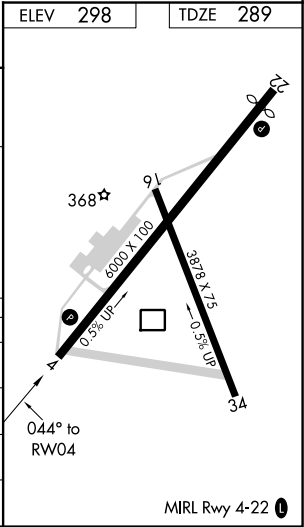
RNAV (GPS) RWY 4  
MOULTRIE MUNI (MGR)

RNP APCH.	MISSED APPROACH: Climb to 2500 direct TUMVY and hold.
Circling Rwy 16 NA at night. For uncompensated Baro-VNAV systems, LNAV/VNAV NA below -15°C or above 54°C.	

AWOS-3PT <b>118.925</b>	VALDOSTA APP CON ★ <b>126.6 285.6</b>	UNICOM <b>122.8</b> (CTAF) <b>0</b>
----------------------------	--	--



4 NM Holding Pattern	YALMI	ZOLGU	JELGU	RW04
6000 2500	2000	1700	1500	
GP 3.00° TCH 45	044°	044°	044°	
6.6 NM	3.6 NM	0.6 NM	1.1 NM	
CATEGORY	A	B	C	D
LPV DA		539-1	250 (300-1)	
LNAV/VNAV DA		552-1	263 (300-1)	
LNAV MDA		660-1	371 (400-1)	
CIRCLING	720-1 422 (500-1)	760-1 462 (500-1)	860-1½ 562 (600-1½)	1080-2½ 782 (800-2½)



SE-4, 31 DEC 2020 to 28 JAN 2021

SE-4, 31 DEC 2020 to 28 JAN 2021